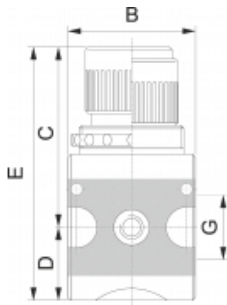


**Druckregler mit Manometer**

**Pressure regulator with gauge**

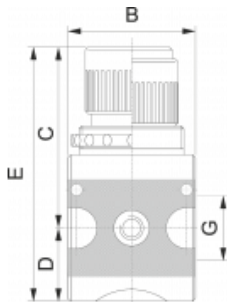


G	B	C	D	E	Pbar	NI/min	BR	€/St	Bestell-Nr.
G 1/8	40	63	10	84	0,5-10	1100	O	30,28	77.100.518
G 1/4	48	67	27	94	0,5-6	1500	1	35,88	77.020.514
G 1/4	48	67	27	94	0,5-10	1500	1	35,88	77.100.514
G 3/8	48	67	27	94	0,5-10	1500	1	35,88	77.100.538
G 1/2	70	97	36	133	0,5-6	6000	2	55,17	77.020.512
G 1/2	70	97	36	133	0,5-10	6000	2	55,17	77.100.512
G 3/4	70	97	36	133	0,5-10	6000	2	55,17	77.100.534
G 1	100	128	52	180	0,5-10	12500	5	139,62	77.100.510



**Präzisions-Druckregler mit Manometer**

**Precision pressure regulator with gauge**

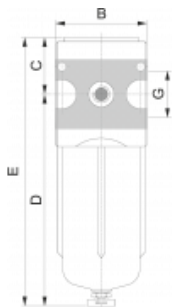


G	B	C	D	E	Pbar	NI/min	BR	€/St	Bestell-Nr.
G 1/4	48	67	27	94	0,2-6	1500	1	74,58	77.101.514
G 1/2	70	97	36	133	0,2-6	6000	2	77,94	77.101.512



**Filter**

**Filter**

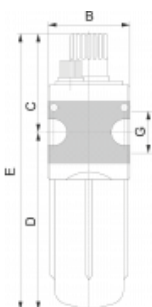


G	B	C	D	E	NI/min	BR	€/St	Bestell-Nr.
G 1/8	40	12	103	115	1000	O	21,08	77.102.518
G 1/4	48	28	128	156	2100	1	29,74	77.102.514
G 3/8	48	28	128	156	2100	1	29,74	77.102.538
G 1/2	70	36	151	187	4000	2	52,12	77.102.512
G 3/4	70	36	151	187	4000	2	52,83	77.102.534
G 1	100	52	257	309	8000	5	132,89	77.102.510



**Nebelöler**

**Lubricator**



G	B	C	D	E	NI/min	BR	€/St	Bestell-Nr.
G 1/8	40	65	82	147	950	O	25,24	77.103.518
G 1/4	48	58	109	167	1900	1	36,79	77.103.514
G 3/8	48	58	109	167	1900	1	36,26	77.103.538
G 1/2	70	65	132	197	5000	2	58,57	77.103.512
G 3/4	70	65	132	197	5000	2	57,71	77.103.534
G 1	100	84	236	320	18000	5	132,89	77.103.510

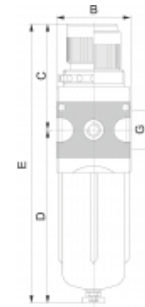


**Filterregler mit Manometer**

**Filter regulator with gauge**



G	B	C	D	E	Pbar	NI/min	BR	€/St	Bestell-Nr.
G 1/8	40	63	102	165	0,5-10	950	O	38,16	77.104.518
G 1/4	48	67	129	196	0,5-10	1400	1	53,31	77.104.514
G 3/8	48	67	129	196	0,5-10	1400	1	53,31	77.104.538
G 1/2	70	97	151	248	0,5-10	3500	2	96,09	77.104.512
G 3/4	70	97	151	248	0,5-10	3500	2	96,09	77.104.534
G 1	100	128	257	385	0,5-10	12000	5	229,89	77.104.510

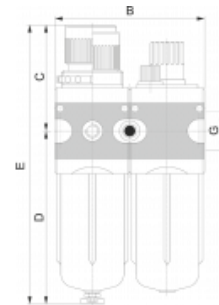


**Filterregler-Öler mit Manometer**

**Filter regulator-lubricator with gauge**



G	B	C	D	E	NI/min	BR	€/St	Bestell-Nr.
G 1/8	80	63	102	165	600	O	71,21	77.105.518
G 1/4	93	67	129	196	1100	1	94,51	77.105.514
G 3/8	93	67	129	196	1100	1	135,69	77.105.538
G 1/2	136	97	151	248	3500	2	158,95	77.105.512
G 3/4	136	97	151	248	3500	2	156,74	77.105.534
G 1	200	128	257	385	10500	5	376,79	77.105.510

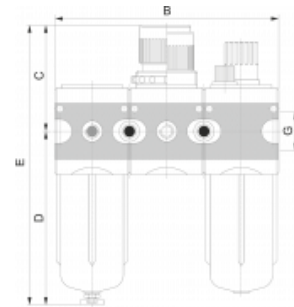


**Filter-Regler-Öler mit Manometer**

**Filter regulator-lubricator with gauge**



G	B	C	D	E	NI/min	BR	€/St	Bestell-Nr.
G 1/8	120	63	102	165	700	O	89,16	77.106.518
G 1/4	138	67	129	196	1100	1	108,65	77.106.514
G 3/8	138	67	129	196	1100	1	108,65	77.106.538
G 1/2	202	97	151	248	3000	2	171,53	76.106.512
G 3/4	202	97	151	248	3000	2	171,53	77.106.534
G 1	300	128	257	385	11300	5	407,63	77.106.510

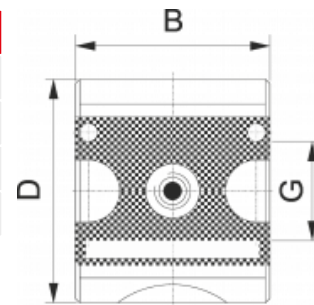


**Verteiler, 4-fach**

**Distributor, 4-way**

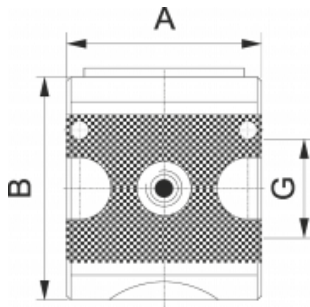


G	B	D	NI/min	BR	€/St	Bestell-Nr.
G 1/4	48	52	2500	1	28,47	77.110.514
G 3/8	48	52	2500	1	28,93	77.110.538
G 1/2	70	67	11000	2	37,13	77.110.512
G 3/4	70	67	11000	2	37,13	77.110.534



### Anfahrventil

#### Starting valve

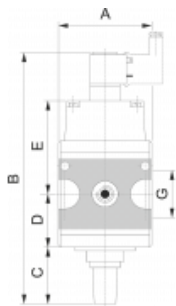


G	A	B	NI/min	BR	€/St	Bestell-Nr.
G 1/4	48	56	1000	1	44,19	77.111.514
G 1/2	70	73	4000	2	52,12	77.111.512



### 3/2-Wege-Ventil

#### 3/2-valve

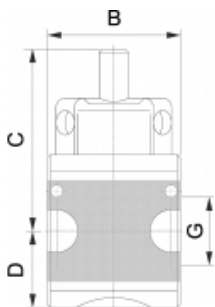


G	A	B	C	D	E	NI/min	BR	€/St	Bestell-Nr.
G 1/4	48	139	36	26	44	1100	1	120,36	77.112.514
G 1/2	70	183	42	33	57	4000	2	149,02	77.112.512



### Kugelhahn

#### Ball-Valve

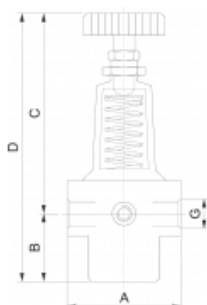


G	B	C	D	NI/min	BR	€/St	Bestell-Nr.
G 1/8	40	37	20	1800	O	24,80	77.113.518
G 1/4	48	54	26	2800	1	36,79	77.113.514
G 3/8	48	54	26	2800	1	36,79	77.113.538
G 1/2	70	70	34	11000	2	51,58	77.113.512
G 3/4	70	70	34	11000	2	48,71	77.113.534



### Präzisionsdruckregler

#### Precision-regulator

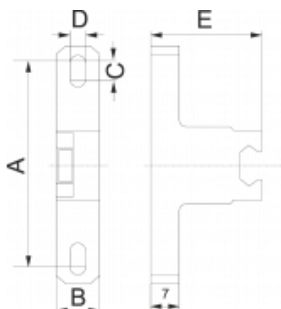


G	A	B	C	D	Pbar	NI/min	€/St	Bestell-Nr.
G 1/4	58	17	102	119	0,05-2	450	114,38	77.120.514
G 1/4	58	17	102	119	0,05-4	570	114,38	77.121.514
G 1/4	58	17	102	119	0,05-7	850	114,38	77.122.514



### Befestigungsbausatz (2 Stk.), Kunststoff PA 66

#### Mounting kit (2 pcs.), plastic PA 66



A	B	C	D	E	BR	€/St	Bestell-Nr.
49	11	4,5	5,5	29,4	O	0,00	66.001.700

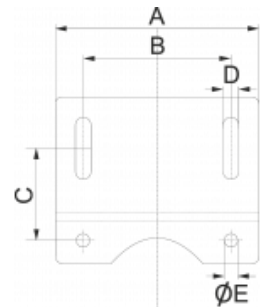


**Befestigungswinkel mit 2 Schrauben, Stahlblech verzinkt**

Mounting bracket with 2 crews, steel galvanized



A	B	C	D	E	BR	€/St	Bestell-Nr.
48	38	23,5	5,3	M4	1	5,10	32.001.501
65	50	28,0	6,4	M5	2	8,30	32.001.502
124	105	81,0	12,0	6,4	5	23,20	32.001.505

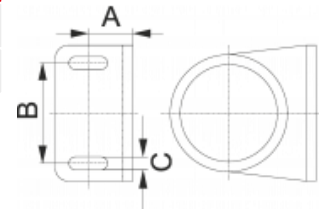


**Befestigungswinkel inkl. Kontermutter für Schalttafeleinbau, Stahlblech verzinkt**

Mounting bracket incl. panel nut for panel mounting, steel galvanized



A	B	C	BR	€/St	Bestell-Nr.
14,2	38	5,4	0+1	7,48	32.001.530
17,5	50	6,4	2	8,19	32.001.550



**Schalttafelmutter**

Control panel nut



ØA	B	C	Material	BR	€/St	Bestell-Nr.
35	5,5	M30 x 1,5	Messing	0+1	2,25	16.001.230
64	7,6	M50 x 1,5	Kunststoff	2	2,43	66.001.250

