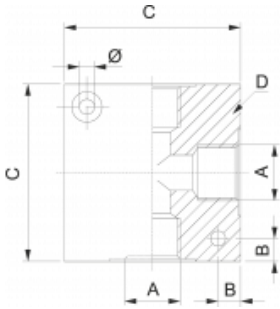


Verteilerblock aus Aluminium

Aluminium cross manifold

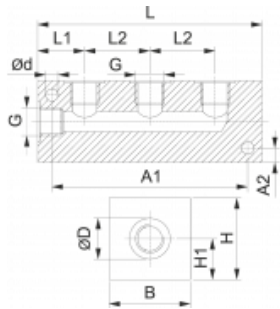


Ø	A	B	C	D	€/St	Bestell-Nr.
4,5	G 1/8	4	25	15	2,70	23.001.218
5,5	G 1/4	7	40	20	4,30	23.001.214
5,5	G 3/8	8	50	25	6,53	23.001.238
5,5	G 1/2	8	50	33	7,69	23.001.212



Verteilerleiste, 3- fach aus Aluminium

3 - connection - block

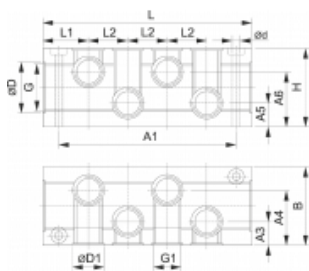


Ød	G	ØD	A 1	B	H	L	L1	L2	H1	€/St	Bestell-Nr.
3,4	M 5	8,5	32	15	15	40	10,0	10	10	7,47	23.002.205
4,4	G 1/8	14,5	46	20	20	56	13,5	17	46	7,94	23.002.218
6,4	G 1/4	19,0	74	30	30	89	20,0	29	17	12,37	23.002.214
6,4	G 3/8	23,0	72	30	40	85	20,0	26	19	20,79	23.002.238
6,4	G 1/2	27,5	90	30	40	105	20,0	32	22	22,33	23.002.212

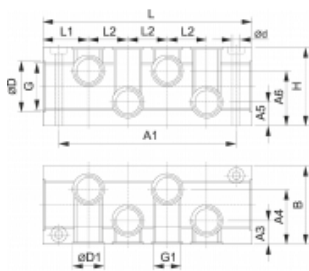


Verteilerleiste, 8 - fach aus Aluminium

8 - connection - block



G	ØD	ØD1	G1	BH	L	L1	L2	€/St	Bestell-Nr.
G 1/4	19,0	8,5	M 5	32	25	65	17,5	24,71	23.003.214
G 3/8	23,0	14,5	G 1/8	40	30	114	22,5	29,23	23.003.238
G 1/2	27,5	19,0	G 1/4	50	35	144	28,5	38,62	23.003.212
G 3/4	34,0	27,5	G 1/2	60	45	170	31,0	94,73	23.003.234



Ød	A 1	L2	A3	A4	A5	A6	€/St	Bestell-Nr.
4,4	50	10	12,5	19,5	8,5	16,5	24,71	23.003.214
6,5	100	23	16,5	24,5	10,5	19,5	29,23	23.003.238
6,5	128	29	20,5	29,5	13,0	22,0	38,62	23.003.212
8,5	150	36	27,0	33,0	19,5	25,5	94,73	23.003.234

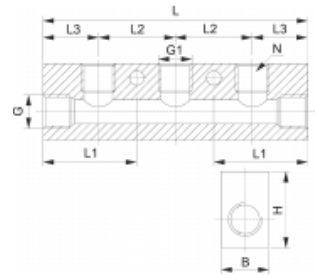


Durchgangsleiste aus Aluminium

Through - going block



G	G1	B	H	L	L1	L2	L3	N	€/St	Bestell-Nr.
G 1/4	G 1/8	20	30	60	30	30	15	2	12,34	23.004.218
G 1/4	G 1/8	20	30	90	30	30	15	3	17,05	23.005.218
G 1/4	G 1/8	20	30	120	30	30	15	4	23,71	23.006.218
G 1/4	G 1/8	20	30	150	30	30	15	5	28,13	23.007.218
G 3/8	G 1/4	20	40	72	36	36	18	2	13,41	23.004.214
G 3/8	G 1/4	20	30	108	36	36	18	3	18,31	23.005.214
G 3/8	G 1/4	20	30	144	36	36	18	4	26,03	23.006.214
G 3/8	G 1/4	20	30	180	36	36	18	5	30,24	23.007.214

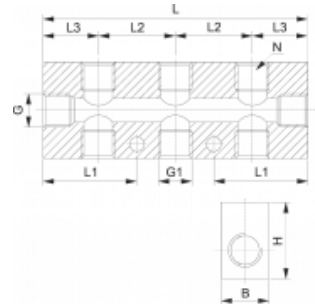


Durchgangsleiste aus Aluminium

Through - going block



G	G1	B	H	L	L1	L2	L3	N	€/St	Bestell-Nr.
G 1/4	G 1/8	20	30	60	30	30	15	2+2	12,72	23.008.218
G 1/4	G 1/8	20	30	90	30	30	15	3+3	15,23	23.009.218
G 1/4	G 1/8	20	30	120	30	30	15	4+4	17,74	23.010.218
G 1/4	G 1/8	20	30	150	30	30	15	5+5	20,57	23.011.218
G 3/8	G 1/4	20	40	72	36	36	18	2+2	15,23	23.008.214
G 3/8	G 1/4	20	30	108	36	36	18	3+3	18,84	23.009.214
G 3/8	G 1/4	20	30	144	36	36	18	4+4	22,29	23.010.214
G 3/8	G 1/4	20	30	180	36	36	18	5+5	26,06	23.011.214
G 1/2	G 1/4	28	40	116	40	36	22	3+3	24,81	23.012.214
G 1/2	G 1/4	28	40	152	40	36	22	4+4	27,95	23.013.214
G 1/2	G 1/4	28	40	188	40	36	22	5+5	0,00	23.014.214 ¹



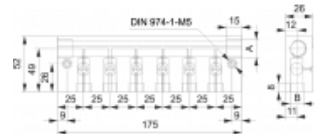
1 = * Preis auf Anfrage

Verteilerleiste mit 6 integrierten Kugelhähnen

Distributor - block with 6 integral ball valves



A	B	€/St	Bestell-Nr.
G 3/8 (2x)	G 1/4 (6x)	156,58	71.102.514

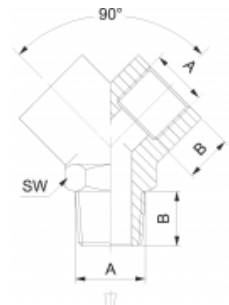


Y Verteiler, konisch, Messing vernickelt

Male Y, brass nickel plated

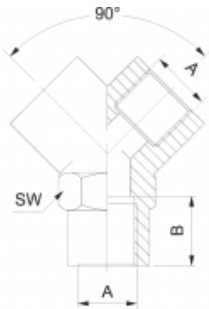


A	B	SW	€/St	Bestell-Nr.
G 1/8	8,0	14	1,82	11.146.218
G 1/4	11,0	17	2,17	11.146.218
G 3/8	11,5	22	3,55	11.146.238
G 1/2	14,0	26	5,50	11.146.212



Y - Verteiler, Messing vernickelt

Female - Y, brass nickel plated



A	B	SW	€/St	Bestell-Nr.
G 1/8	8,0	14	1,82	11.147.218
G 1/4	11,0	17	2,17	11.147.214
G 3/8	11,5	22	3,55	11.147.238
G 1/2	14,0	26	5,50	11.147.212

