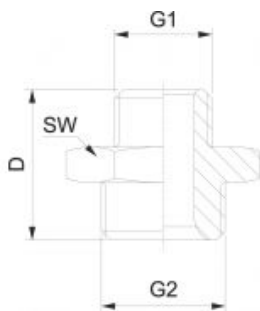




Doppelnippel aus 1.4571, Gewinde zylindrisch

Parallel nipple, AISI 316Ti

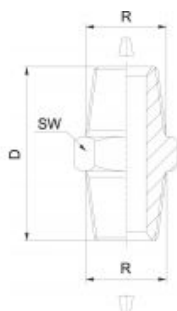


G1	G2	D	SW	€/St	Bestell-Nr.
M5	M5	15	8	9,16	56.046.355
M5	G 1/8	17	14	7,34	56.047.358
G 1/8	G 1/8	21	14	6,64	56.048.388
G 1/8	G 1/4	22	17	8,54	56.049.384
G 1/8	G 3/8	25	19	10,22	56.046.388
G 1/4	G 1/4	23	17	8,34	56.050.344
G 1/4	G 3/8	24	19	9,41	56.051.348
G 1/4	G 1/2	27	24	11,40	56.046.342
G 3/8	G 3/8	23	19	8,54	56.052.388
G 3/8	G 1/2	27	24	10,25	56.053.382
G 3/8	G 3/4	36	32	15,71	56.046.384
G 1/2	G 1/2	29	24	10,25	56.054.322
G 1/2	G 3/4	34	32	18,56	56.046.324
G 1/2	G 1	42	36	25,20	56.046.321
G 3/4	G 3/4	35	32	17,14	56.046.344
G 3/4	G 1	42	36	25,14	56.046.341
G 1	G 1	45	36	26,38	56.046.311
G 1	G 1 1/4	50	50	81,48	56.046.314
G 1 1/4	G 1 1/4	53	50	64,74	56.049.314
G 1 1/4	G 1 1/2	53	55	78,93	56.046.312
G 1 1/2	G 1 1/2	53	55	55,83	56.046.322



Doppelnippel aus 1.4571, Gewinde konisch

Taper nipple, AISI 316Ti



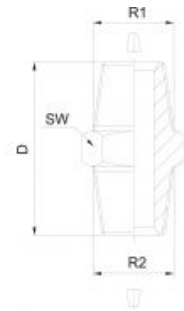
R	D	SW	€/St	Bestell-Nr.
R 1/8	24	14	11,09	56.047.318
R 1/4	24	14	11,09	56.047.314
R 3/8	28	19	11,65	56.047.338
R 1/2	34	22	12,26	56.048.312
R 3/4	40	30	21,23	56.047.334
R 1	46	36	24,25	56.047.310
R 1 1/4	52	46	38,64	56.048.314
R 1 1/2	54	50	44,52	56.047.312



Doppelnippel aus 1.4401/1.4408, Gewinde konisch
 Taper nipple, AISI 316



R1	R2	D	SW	€/St	Bestell-Nr.
R 1/8	R 1/8	30	13	2,06	46.046.218
R 1/8	R 1/4	31	15	2,24	46.046.284
R 1/8	R 3/8	35	19	2,44	46.046.288
R 1/4	R 1/4	32	16	2,05	46.046.214
R 1/4	R 3/8	35	19	2,44	46.046.248
R 1/4	R 1/2	38	23	3,20	46.046.242
R 3/8	R 3/8	32	19	2,25	46.046.238
R 3/8	R 1/2	40	23	3,20	46.046.282
R 3/8	R 3/4	42	30	4,20	46.047.284
R 1/2	R 1/2	38	25	2,96	46.046.212
R 1/2	R 3/4	44	30	4,20	46.046.224
R 1/2	R 1	46	36	5,88	46.046.221
R 3/4	R 3/4	46	29	4,03	46.046.234
R 3/4	R 1	46	36	5,88	46.046.241
R 3/4	R 1 1/4	50	45	8,37	46.047.241
R 1	R 1	51	36	5,85	46.046.210
R 1	R 1 1/4	54	46	8,37	46.046.211
R 1	R 1 1/2	52	50	10,90	46.047.211
R 1 1/4	R 1 1/4	56	46	8,21	46.048.211
R 1 1/4	R 1 1/2	57	50	10,90	46.049.211
R 1 1/2	R 1 1/2	58	51	10,32	46.050.211



Rohrdoppelnippel konisch aus 1.4571, 16 bar

Taper threaded nipple, AISI 316Ti



Ød	ØD	R	L*	€/St	Bestell-Nr.
6,0	10,0	R 1/8	30	3,38	56.130.318 ¹
6,0	10,0	R 1/8	40	3,47	56.140.318
6,0	10,0	R 1/8	60	4,90	56.160.318
6,0	10,0	R 1/8	80	5,99	56.180.318
6,0	10,0	R 1/8	100	7,14	56.200.318
6,0	10,0	R 1/8	120	7,88	56.220.318
8,9	13,5	R 1/4	30	3,77	56.130.314 ¹
8,9	13,5	R 1/4	40	4,05	56.140.314
8,9	13,5	R 1/4	60	4,96	56.160.314
8,9	13,5	R 1/4	80	5,78	56.180.314
8,9	13,5	R 1/4	100	6,39	56.200.314
8,9	13,5	R 1/4	120	7,51	56.220.314
8,9	13,5	R 1/4	150	9,04	56.250.314
8,9	13,5	R 1/4	200	10,17	56.300.314
8,9	13,5	R 1/4	250	12,00	56.350.314
12,9	17,2	R 3/8	40	3,64	56.140.338 ¹
12,9	17,2	R 3/8	60	4,76	56.160.338
12,9	17,2	R 3/8	80	6,02	56.180.338
12,9	17,2	R 3/8	100	6,83	56.200.338
12,9	17,2	R 3/8	120	7,92	56.220.338
12,9	17,2	R 3/8	150	9,15	56.250.338
12,9	17,2	R 3/8	200	11,12	56.300.338
12,9	17,2	R 3/8	250	13,16	56.350.338
16,1	21,3	R 1/2	40	4,39	56.140.312 ¹
16,1	21,3	R 1/2	60	4,96	56.160.312
16,1	21,3	R 1/2	80	5,68	56.180.312
16,1	21,3	R 1/2	100	7,04	56.200.312
16,1	21,3	R 1/2	120	8,74	56.220.312
16,1	21,3	R 1/2	150	10,57	56.250.312
16,1	21,3	R 1/2	180	12,04	56.280.312
16,1	21,3	R 1/2	200	12,75	56.300.312
16,1	21,3	R 1/2	250	16,80	56.350.312
21,7	26,9	R 3/4	60	6,63	56.160.334 ¹
21,7	26,9	R 3/4	80	8,02	56.180.334
21,7	26,9	R 3/4	100	8,98	56.200.334
21,7	26,9	R 3/4	120	9,49	56.220.334
21,7	26,9	R 3/4	150	11,63	56.250.334
21,7	26,9	R 3/4	200	14,59	56.300.334
21,7	26,9	R 3/4	250	19,69	56.350.334



VERSCHRAUBUNGEN - EDELSTAHL

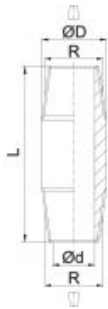
Fittings - stainless steel

27,3	33,7	R 1	60	8,02	56.160.310 ¹
27,3	33,7	R 1	80	9,18	56.180.310
27,3	33,7	R 1	100	10,75	56.200.310
27,3	33,7	R 1	120	12,25	56.220.310
27,3	33,7	R 1	150	15,60	56.250.310
27,3	33,7	R 1	200	19,75	56.300.310
27,3	33,7	R 1	250	31,90	56.350.310
27,3	33,7	R 1	300	37,35	56.400.310

1 = L* = Sonderlängen auf Anfrage

Rohrdoppelnippel konisch aus 1.4571, 16 bar

Taper threaded nipple, AISI 316Ti



Ød	ØD	R	L*	€/St	Bestell-Nr.
36,0	42,4	R 1 1/4	60	10,92	56.160.341 ¹
36,0	42,4	R 1 1/4	80	12,80	56.180.341
36,0	42,4	R 1 1/4	100	16,82	56.200.341
36,0	42,4	R 1 1/4	120	19,50	56.220.341
36,0	42,4	R 1 1/4	150	22,65	56.250.341
36,0	42,4	R 1 1/4	200	28,15	56.300.341
36,0	42,4	R 1 1/4	250	34,80	56.350.341
36,0	42,4	R 1 1/4	300	44,50	56.400.341
41,9	48,3	R 1 1/2	60	12,42	56.160.321 ¹
41,9	48,3	R 1 1/2	80	16,39	56.180.321
41,9	48,3	R 1 1/2	100	17,15	56.200.321
41,9	48,3	R 1 1/2	120	20,65	56.220.321
41,9	48,3	R 1 1/2	150	24,80	56.250.321
41,9	48,3	R 1 1/2	200	30,85	56.300.321
41,9	48,3	R 1 1/2	250	36,85	56.350.321
41,9	48,3	R 1 1/2	300	46,80	56.400.321
53,1	60,3	R 2	60	16,02	56.160.320 ¹
53,1	60,3	R 2	80	19,70	56.180.320
53,1	60,3	R 2	100	23,80	56.200.320
53,1	60,3	R 2	120	29,60	56.220.320
53,1	60,3	R 2	150	34,70	56.250.320
53,1	60,3	R 2	200	43,50	56.300.320
53,1	60,3	R 2	250	53,00	56.350.320
53,1	60,3	R 2	300	63,90	56.400.320
68,9	76,1	R 2 1/2	80	37,50	56.180.322 ¹
68,9	76,1	R 2 1/2	100	38,15	56.200.322
68,9	76,1	R 2 1/2	120	43,60	56.220.322
68,9	76,1	R 2 1/2	150	51,50	56.250.322
68,9	76,1	R 2 1/2	200	66,90	56.300.322
68,9	76,1	R 2 1/2	250	77,00	56.350.322
68,9	76,1	R 2 1/2	300	95,25	56.400.322
80,9	88,9	R 3	80	53,50	56.180.330 ²
80,9	88,9	R 3	100	55,00	56.200.330
80,9	88,9	R 3	120	56,55	56.220.330
80,9	88,9	R 3	150	70,35	56.250.330
80,9	88,9	R 3	200	90,80	56.300.330
80,9	88,9	R 3	250	109,20	56.350.330
80,9	88,9	R 3	300	131,15	56.400.330

1 = L* = Sonderlängen auf Anfrage

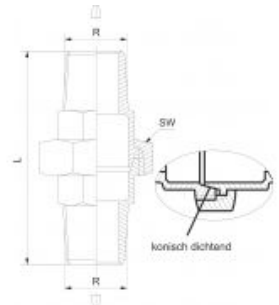
2 = Gewinde Withworth Rohrgewinde zylindrisch nach DIN ISO 228 von G 1/8" bis G 3" auf Anfrage

412 AGA Doppelnippel lösbar mit konischem Außengewinde aus 1.4571 mit Innensechskant, konisch dichtend

Taper double nipple, detachable, AISI 316Ti, conical tightened



R	L	SW	€/St	Bestell-Nr.
R 1/8	27	15	16,10	56.046.518
R 1/4	34	19	18,23	56.046.514
R 3/8	36	22	20,61	56.046.538
R 1/2	44	27	28,67	56.046.512

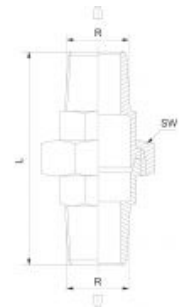


312 AGA Doppelnippel lösbar mit konischem Außengewinde aus 1.4408, konisch dichtend

Taper double nipple, detachable, AISI 316C, conical tightened



R	L	SW	€/St	Bestell-Nr.
R 1/4	56	29	13,20	46.024.514
R 3/8	58	34	16,72	46.024.538
R 1/2	69	40	18,04	46.024.512
R 3/4	74	46	13,33	46.024.534
R 1	89	58	18,90	46.024.510
R 1 1/4	90	64	24,92	46.024.511
R 1 1/2	103	68	37,13	46.025.511
R 2	99	85	48,47	46.025.520

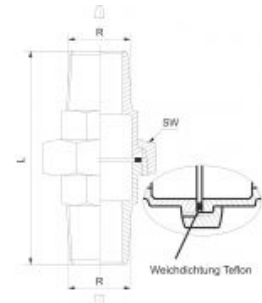


411 AGA Doppelnippel lösbar mit konischem Außengewinde aus 1.4571, flach dichtend, Dichtung Teflon

Taper double nipple, detachable, AISI 316Ti, flat tightened, sealing ring teflon PTFE

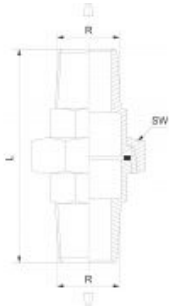


R	L	SW	€/St	Bestell-Nr.
R 1/8	55	27	34,77	56.048.518
R 1/4	55	27	26,67	56.048.514
R 3/8	61	32	34,68	56.048.538



311 AGA Doppelnippel lösbar mit konischem Außengewinde aus 1.4408, flach dichtend, Dichtung Teflon

Taper double nipple, detachable, AISI 316C, flat tightened, sealing ring teflon PTFE

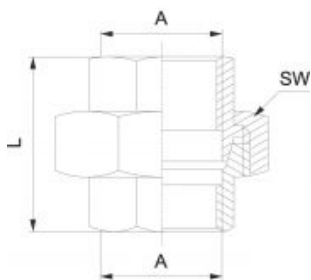


R	L	SW	€/St	Bestell-Nr.
R 1/8	66	29	18,50	46.027.518
R 1/4	66	28	18,00	46.027.514
R 3/8	67	35	25,20	46.027.538
R 1/2	67	39	16,65	46.027.512
R 3/4	72	46	22,60	46.027.534
R 1	82	55	27,80	46.027.510
R 1 1/4	88	64	39,50	46.027.511
R 1 1/2	96	69	49,10	46.028.511
R 2	116	87	74,15	46.028.520



312 G Verschraubung lösbar mit Innengewinde aus 1.4408, konisch dichtend

Inside thread union, AISI 316C, conical tightened



A=Rp	L	SW	€/St	Bestell-Nr.
Rp 1/8	29	25	7,14	46.030.518
Rp 1/4	38	30	6,56	46.030.514
Rp 3/8	38	34	7,28	46.030.538
Rp 1/2	42	42	8,40	46.030.512
Rp 3/4	50	47	10,30	46.030.534
Rp 1	48	53	15,68	46.030.510
Rp 1 1/4	59	71	20,75	46.030.511
Rp 1 1/2	64	78	30,23	46.031.511
Rp 2	69	92	42,00	46.031.520

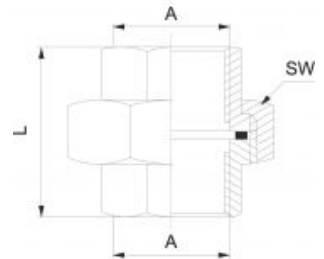


311 G Verschraubung lösbar mit Innengewinde aus 1.4408, flach dichtend, Dichtung Teflon

Inside thread union, AISI 316C, flat tightened, sealing ring teflon PTFE



A=Rp	L	SW	€/St	Bestell-Nr.
Rp 1/8	29	25	6,72	46.033.518
Rp 1/4	38	30	6,76	46.033.514
Rp 3/8	38	34	7,36	46.033.538
Rp 1/2	41	42	8,46	46.033.512
Rp 3/4	50	47	11,17	46.033.534
Rp 1	48	53	15,88	46.033.510
Rp 1 1/4	59	71	21,17	46.033.511
Rp 1 1/2	64	78	31,56	46.034.511
Rp 2	69	92	42,98	46.034.520

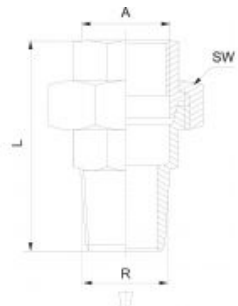


312 IAG Verschraubung lösbar mit Innen-/Aussengewinde aus 1.4408, konisch dichtend

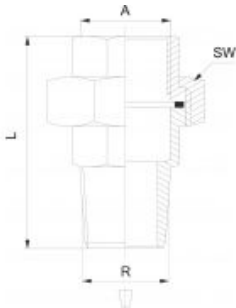
Union thread female-male, AISI 316C, conical tightened



R	A=Rp	L	SW	€/St	Bestell-Nr.
R 1/8	Rp 1/8	40	25	7,05	46.036.518
R 1/4	Rp 1/4	48	30	7,02	46.036.514
R 3/8	Rp 3/8	48	34	7,89	46.036.538
R 1/2	Rp 1/2	56	42	9,02	46.036.512
R 3/4	Rp 3/4	66	47	11,68	46.036.534
R 1	Rp 1	68	53	17,19	46.036.510
R 1 1/4	Rp 1 1/4	83	71	24,95	46.036.511
R 1 1/2	Rp 1 1/2	86	78	32,17	46.037.511
R 2	Rp 2	94	92	43,96	46.037.520



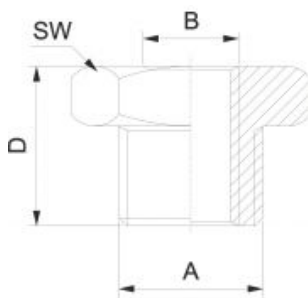
**311 IAG Verschraubung lösbar mit
 Innen-/Aussengewinde aus 1.4408, flach dichtend,
 Dichtung Teflon**
 Union thread female-male, AISI 316C, flat tightened,
 sealing ring teflon PTFE



R	A=Rp	L	SW	€/St	Bestell-Nr.
R 1/8	Rp 1/8	41	25	7,12	46.039.518
R 1/4	Rp 1/4	48	30	7,21	46.039.514
R 3/8	Rp 3/8	48	34	7,65	46.039.538
R 1/2	Rp 1/2	58	42	9,28	46.039.512
R 3/4	Rp 3/4	66	47	13,32	46.039.534
R 1	Rp 1	69	53	19,15	46.039.510
R 1 1/4	Rp 1 1/4	83	71	30,40	46.039.511
R 1 1/2	Rp 1 1/2	87	78	37,28	46.040.511
R 2	Rp 2	95	92	48,20	46.040.520



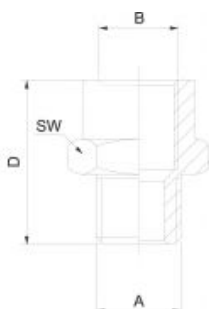
425 Reduziernippel kurz aus 1.4571, zylindrisch
 Parallel reducer, AISI 316Ti



A	B	D	SW	€/St	Bestell-Nr.
G 1/8	M5	11,0	14	7,56	56.055.358
G 1/4	M5	11,0	17	5,91	56.055.354
G 1/4	G 1/8	14,5	17	5,10	56.056.384
G 3/8	G 1/8	14,5	19	6,63	56.056.388
G 3/8	G 1/4	14,5	19	6,36	56.056.348
G 1/2	G 1/8	18,0	24	10,84	56.056.382
G 1/2	G 1/4	15,0	22	7,78	56.056.342
G 1/2	G 3/8	15,0	22	8,04	56.058.382
G 3/4	G 3/8	18,0	32	14,84	56.059.384
G 3/4	G 1/2	21,0	32	11,84	56.059.324
G 1	G 1	24,0	36	22,14	56.059.321
G 1	G 3/4	18,0	36	19,48	56.059.341



442 Reduziernippel lang aus 1.4571, zylindrisch
 Parallel reducer, AISI 316Ti



A	B	D	SW	€/St	Bestell-Nr.
M5	G 1/8	20	14	7,81	56.060.358
G 1/8	G 1/4	29	17	7,70	56.060.384
G 1/4	G 3/8	29	19	8,32	56.060.348
G 3/8	G 1/2	30	24	16,16	56.060.382
G 1/2	G 3/4	38	32	21,76	56.060.324

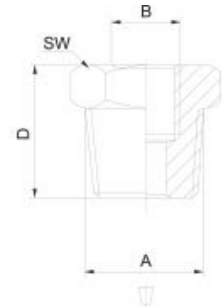


**325 Reduziernippel aus 1.4408, Aussengewinde
konisch, Innengewinde zylindrisch**

Reducer, AISI 316C, external thread taper, internal
thread parallel



A	B	D	SW	€/St	Bestell-Nr.
R 1/4	Rp 1/8	15	16	2,01	46.055.248
R 3/8	Rp 1/8	16	18	2,17	46.055.288
R 3/8	Rp 1/4	16	18	2,17	46.055.284
R 1/2	Rp 1/8	21	26	2,85	46.055.228
R 1/2	Rp 1/4	21	26	2,85	46.055.224
R 1/2	Rp 3/8	21	26	2,85	46.056.228
R 3/4	Rp 1/4	24	30	3,37	46.056.244
R 3/4	Rp 3/8	24	30	3,37	46.056.248
R 3/4	Rp 1/2	24	30	3,37	46.056.242
R 1	Rp 1/2	27	35	5,21	46.056.212
R 1	Rp 3/4	27	35	5,21	46.056.214
R 1 1/4	Rp 3/4	30	45	7,17	46.057.214
R 1 1/4	Rp 1	30	45	7,17	46.057.211
R 1 1/2	Rp 1/2	36	52	11,75	46.057.212
R 1 1/2	Rp 3/4	36	52	11,75	46.058.214
R 1 1/2	Rp 1	36	52	10,23	46.058.211
R 1 1/2	Rp 1 1/4	36	52	10,23	46.059.214
R 2	Rp 1	36	63	16,85	46.059.221
R 2	Rp 1 1/4	36	63	16,85	46.059.224
R 2	Rp 1 1/2	36	63	15,75	46.059.224

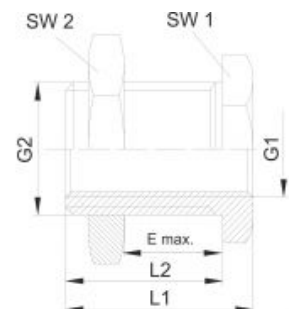


Schottverschraubung aus 1.4571

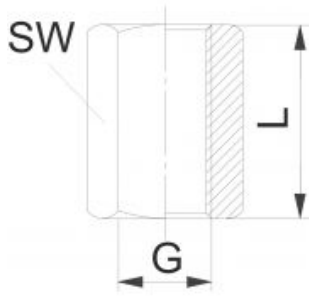
Bulkhead union, AISI 316Ti



G1	G2	L1	L2	SW1	SW2	E max.	€/St	Bestell-Nr.
G 1/8	G 1/4	18	14	17	17	10,0	14,70	56.003.618
G 1/4	G 3/8	22	17	19	22	14,0	14,70	56.003.614
G 3/8	G 1/2	26	21	24	27	16,0	19,46	56.003.638
G 1/2	M28x1,5	33	27	32	36	20,0	23,95	56.003.612



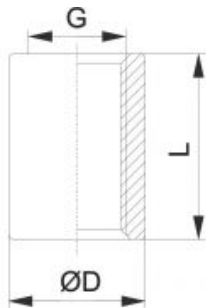
Muffe aus 1.4571, Sechskant
 Sleeve, AISI 316Ti, hexagonal



G	L	SW	€/St	Bestell-Nr.
M5	11	8	7,31	56.083.305
G 1/8	15	14	5,99	56.084.318
G 1/4	22	17	7,72	56.085.314
G 3/8	26	22	8,23	56.086.338
G 1/2	30	27	12,49	56.087.312
G 3/4	36	32	20,58	56.087.334
G 1	40	41	23,94	56.087.310



333 Muffe aus 1.4401/1.4408, rund
 Sleeve, AISI 316



G	ØD	L	€/St	Bestell-Nr.
Rp 1/8	14,0	17	1,85	46.010.218
Rp 1/4	18,0	25	1,85	46.010.214
Rp 3/8	21,3	25	2,48	46.010.238
Rp 1/2	26,4	34	3,50	46.010.212
Rp 3/4	31,8	36	4,86	46.010.234
Rp 1	39,5	43	6,78	46.010.210
Rp 1 1/4	48,3	48	10,22	46.010.211
Rp 1 1/2	54,5	48	11,50	46.011.211
Rp 2	66,3	56	20,39	46.011.220
Rp 2 1/2	82,0	65	34,66	46.011.221
Rp 3	95,0	71	41,98	46.011.230

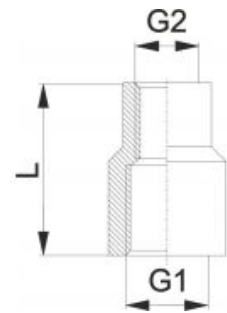


Reduziermuffe aus 1.4401/1.4408, rund

Reducer, AISI 316



G1	G2	L	€/St	Bestell-Nr.
Rp 1/4	Rp 1/8	26,0	2,80	46.012.248
Rp 3/8	Rp 1/8	30,0	3,15	46.012.288
Rp 3/8	Rp 1/4	29,0	3,15	46.012.284
Rp 1/2	Rp 1/8	34,4	4,15	46.012.228
Rp 1/2	Rp 1/4	33,0	4,20	46.012.224
Rp 1/2	Rp 3/8	34,0	4,20	46.013.228
Rp 3/4	Rp 1/4	34,5	6,00	46.013.224
Rp 3/4	Rp 3/8	36,5	6,00	46.013.248
Rp 3/4	Rp 1/2	36,5	6,00	46.013.242
Rp 1	Rp 3/8	42,7	7,69	46.013.218
Rp 1	Rp 1/2	42,8	7,88	46.013.212
Rp 1	Rp 3/4	42,0	7,88	46.013.214
Rp 1 1/4	Rp 1/2	49,0	11,05	46.014.212
Rp 1 1/4	Rp 3/4	48,5	11,12	46.014.214
Rp 1 1/4	Rp 1	52,0	11,12	46.014.211
Rp 1 1/2	Rp 3/4	51,0	14,98	46.015.214
Rp 1 1/2	Rp 1	53,0	14,98	46.015.211
Rp 1 1/2	Rp 1 1/4	53,0	14,98	46.016.214
Rp 2	Rp 1	56,0	23,72	46.016.221
Rp 2	Rp 1 1/4	56,0	23,72	46.016.224
Rp 2	Rp 1 1/2	57,0	23,76	46.016.222

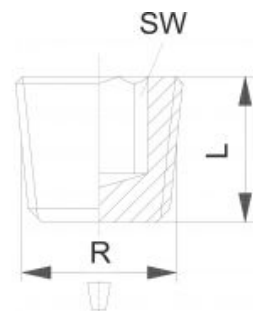


Verschlussstopfen DIN 906, konisch mit Innensechskant aus 1.4571

Taper male plug DIN 906, AISI 316Ti

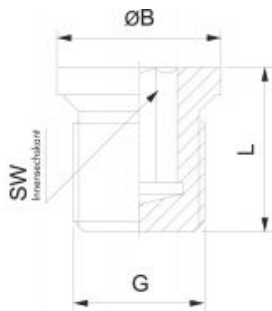


R	L	SW	€/St	Bestell-Nr.
R 1/8	8	5	2,61	56.001.218
R 1/4	10	7	3,94	56.001.214
R 3/8	10	8	6,69	56.001.238
R 1/2	10	10	7,81	56.001.212
R 3/4	12	12	25,78	56.002.234
R 1	12	17	21,08	56.002.210
R 1 1/4	18	22	78,43	56.002.211
R 1 1/2	20	24	117,99	56.003.211



**Verschlusschraube DIN 908, zylindrisch mit
Innensechskant aus 1.4571**

Parallel male plug DIN 908, AISI 316Ti

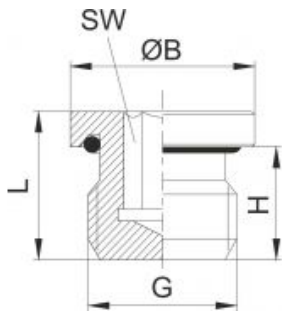


G	ØB	L	SW	€/St	Bestell-Nr.
G 1/8	14	11	5	4,15	56.089.218
G 1/4	18	15	6	4,52	56.090.214
G 3/8	22	15	8	6,89	56.091.238
G 1/2	26	18	10	8,90	56.092.212
G 3/4	32	20	12	16,10	56.089.234
G 1	39	21	17	21,98	56.089.210
G 1 1/4	49	21	22	45,75	56.089.211
G 1 1/2	55	21	24	48,44	56.090.211
G 2	68	25	32	81,56	56.090.220



**Verschlusschraube zylindrisch aus 1.4571 mit O-Ring
aus FKM**

Parallel male plug with O-ring FKM, AISI 316Ti

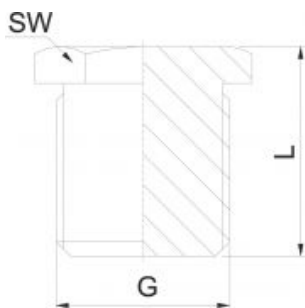


G	ØB	H	L	SW	PN	€/St	Bestell-Nr.
G 1/8	14	8	11	5	630 bar	8,10	56.093.218
G 1/4	18	12	15	6	630 bar	8,38	56.093.214
G 3/8	22	12	17	8	630 bar	9,70	56.093.238
G 1/2	26	14	18	10	630 bar	12,85	56.093.212
G 3/4	32	16	20	12	400 bar	18,95	56.093.234
G 1	40	16	23	17	400 bar	34,86	56.093.210
G 1 1/4	50	16	23	22	400 bar	35,50	56.093.211
G 1 1/2	55	16	23	24	315 bar	46,50	56.093.221



**Verschlusschraube zylindrisch aus 1.4571 mit
Außensechskant**

Parallel male plug with hexagonal, AISI 316Ti



G	L	SW	€/St	Bestell-Nr.
G 1/8	11	13	5,12	56.094.218
G 1/4	13	17	4,68	56.094.214
G 3/8	14	19	5,66	56.094.238
G 1/2	16	24	8,20	56.094.212
G 3/4	16	30	9,49	56.094.234
G 1	19	38	28,36	56.094.210

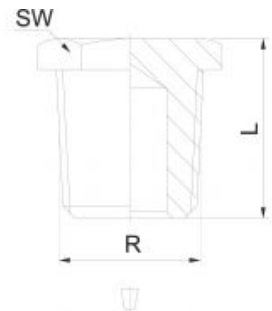


**Verschlussstopfen konisch aus 1.4401/1.4408 mit
 Außensechskant**

Taper male plug with hexagonal, AISI 316



R	L	SW	€/St	Bestell-Nr.
R 1/8	15	12	1,42	46.060.218
R 1/4	18	14	1,50	46.060.214
R 3/8	19	19	1,75	46.060.238
R 1/2	22	22	2,29	46.060.212
R 3/4	25	27	2,83	46.060.234
R 1	28	36	4,65	46.060.210
R 1 1/4	30	46	6,25	46.060.211
R 1 1/2	30	50	9,24	46.061.211
R 2	35	65	12,75	46.061.220
R 2 1/2	51	80	26,85	46.061.222
R 3	54	95	32,80	46.061.230

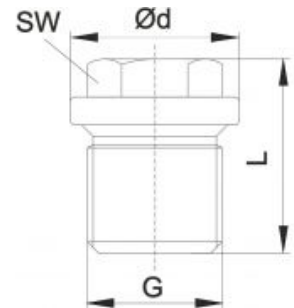


**Verschlussstopfen DIN 910 zyl., mit Außensechskant
 und Bund aus 1.4571**

Parallel male Plug DIN 910, AISI 316Ti

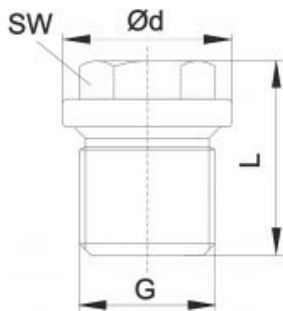


Ød	G	L	SW	€/St	Bestell-Nr.
14	G 1/8	17	10	5,42	56.005.218
18	G 1/4	21	13	6,92	56.005.214
22	G 3/8	21	17	8,33	56.005.238
26	G 1/2	26	19	10,98	56.005.212
32	G 3/4	30	24	19,54	56.005.234
39	G 1	32	27	32,82	56.005.210
49	G 1 1/4	33	30	58,40	56.005.211
55	G 1 1/2	33	34	58,90	56.005.221
72	G 2	40	36	122,50	56.005.220



Verschlussstopfen DIN 910 zyl., mit Außensechskant und Bund aus 1.4401/1.4408

Parallel male plug DIN 910, AISI 316

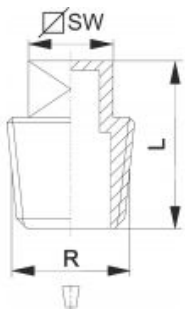


Ød	G	L	SW	€/St	Bestell-Nr.
14	G 1/8	17	10	4,86	96.040.218
18	G 1/4	21	13	4,60	96.040.214
22	G 3/8	21	17	7,20	96.040.238
26	G 1/2	26	19	8,30	96.040.212
32	G 3/4	30	24	12,90	96.040.234
39	G 1	32	27	25,10	96.040.210
49	G 1 1/4	33	30	33,50	96.040.211
55	G 1 1/2	33	30	41,00	96.040.221
68	G 2	40	36	57,50	96.040.220



Verschlussstopfen aus 1.4408, konisch, mit Außenvierkant

Taper male plug, AISI 316C, with external square

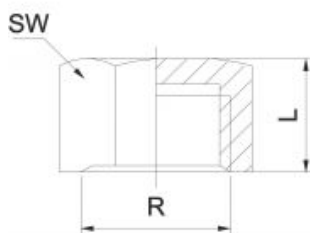


R	L	4-kt SW	€/St	Bestell-Nr.
R 1/8	19	6	1,43	46.062.218
R 1/4	20	9	1,45	46.062.214
R 3/8	22	11	1,62	46.062.238
R 1/2	25	13	2,11	46.062.212
R 3/4	27	16	2,44	46.062.234
R 1	32	20	3,91	46.062.210
R 1 1/4	35	24	4,93	46.062.211
R 1 1/2	37	25	6,51	46.062.221
R 2	38	32	10,94	46.062.220
R 2 1/2	48	42	19,58	46.062.222



Verschlusskappe aus 1.4408 mit Innengewinde

Female plug, AISI 316C



R	L	SW	€/St	Bestell-Nr.
Rp 1/8	15	15	1,29	46.063.218
Rp 1/4	18	18	1,63	46.063.214
Rp 3/8	18	21	1,96	46.063.238
Rp 1/2	20	26	2,36	46.063.212
Rp 3/4	20	31	2,76	46.063.234
Rp 1	26,5	38	4,46	46.063.210
Rp 1 1/4	26,5	41	6,47	46.063.211
Rp 1 1/2	27	52	8,96	46.063.221
Rp 2	29	64	14,70	46.063.220
Rp 2 1/2	30	79	23,05	46.063.222



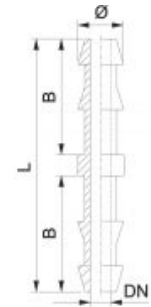
Schlauchverbinder aus 1.4571

Double hose connector, AISI 316Ti



Ø*	B	L	DN	€/St	Bestell-Nr.
6	25	55,0	4,0	11,48	56.061.305
9	25	55,0	6,0	12,43	56.061.309
13	28	60,0	11,0	13,85	56.061.313
19	30	65,0	15,6	17,75	56.061.319
25	37	79,5	22,8	24,61	56.061.325

1 = Ø* = Schlauch-Innendurchmesser



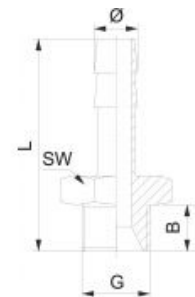
Schlauchtülle aus 1.4571, zylindrisch

Parallel hose connector, AISI 316Ti



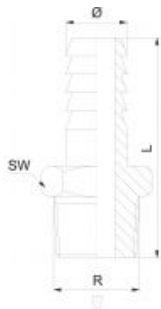
Ø*	G	B	L	SW	€/St	Bestell-Nr.
4	M5	5	15,5	8	5,16	56.071.354
4	G 1/8	9	41,5	14	9,32	56.072.384
6	G 1/8	9	41,5	14	8,99	56.073.386
9	G 1/8	10	48,5	17	8,99	56.074.389
4	G 1/4	10	48,5	17	10,72	56.075.344
6	G 1/4	10	48,5	17	10,72	56.076.346
9	G 1/4	10	48,5	17	10,25	56.077.349
13	G 1/4	10	48,5	19	10,72	56.077.343
4	G 3/8	10	48,5	19	12,60	56.077.384
6	G 3/8	10	48,5	19	11,76	56.078.386
9	G 3/8	10	48,5	19	9,49	56.079.389
13	G 3/8	10	48,5	19	9,97	56.080.383
6	G 1/2	10	48,5	24	15,71	56.080.326
9	G 1/2	10	48,5	24	12,80	56.081.329
13	G 1/2	10	50,0	24	13,24	56.082.323
19	G 1/2	11	50,0	24	12,86	56.082.329
9	G 3/4	11	50,5	27	18,90	56.082.349
13	G 3/4	11	52,0	27	18,90	56.082.343
19	G 3/4	11	50,5	27	21,90	56.083.349
19	G 1	13	50,0	36	26,04	56.083.319
25	G 1	12	50,0	36	26,04	56.083.315

1 = Ø* = Schlauch-Innendurchmesser



Schlauchtülle aus 1.4401/1.4408, konisch

Taper hose connector, AISI 316



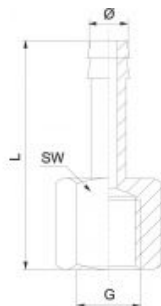
Ø*	R	L	SW	€/St	Bestell-Nr.
6	R 1/8	46	15	2,78	46.003.268
9	R 1/4	41	14	3,05	46.003.294
9	R 3/8	46	19	3,48	46.003.298
13	R 3/8	46	19	4,78	46.003.238
13	R 1/2	49	22	4,98	46.004.232
14	R 1/2	63	23	4,98	46.004.242
19	R 1/2	49	22	5,58	46.004.292
19	R 3/4	65	29	6,85	46.004.294
25	R 1	73	37	8,93	46.005.251
32	R 1 1/4	70	44	11,26	46.005.221
33	R 1 1/4	70	43	11,26	46.005.231
38	R 1 1/2	86	51	17,47	46.005.281
50	R 2	105	62	24,19	46.006.202
60	R 2 1/2	100	79	42,06	46.007.202
75	R 3	110	92	58,25	46.007.253



1 = Ø* = Schlauch-Innendurchmesser

Aufschraubtülle aus 1.4571 mit Innengewinde

Female hose adaptor, AISI 316Ti



Ø*	G	L	SW	€/St	Bestell-Nr.
6	G 1/8	32	14	8,88	56.001.368
9	G 1/8	33	14	8,88	56.001.398
6	G 1/4	33	17	9,92	56.001.364
9	G 1/4	33	17	9,92	56.001.394
13	G 1/4	39	17	9,92	56.001.334
6	G 3/8	33	19	12,24	56.002.368
9	G 3/8	33	19	11,93	56.002.398
13	G 3/8	40	19	11,93	56.002.338
6	G 1/2	36	24	14,17	56.002.362
9	G 1/2	40	24	14,17	56.002.392
13	G 1/2	43	24	14,59	56.002.332
13	G 3/4	50	32	28,64	56.003.334
19	G 3/4	50	32	23,33	56.003.394
19	G 1	50	41	40,70	56.003.391
25	G 1	50	41	41,38	56.003.351

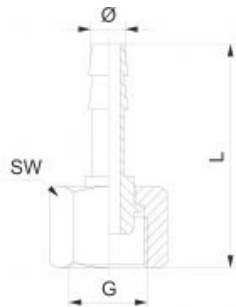


1 = Ø* = Schlauch-Innendurchmesser

Schlauchtülle mit Überwurfmutter aus 1.4571, 2-teilig
Hose connector with nut, 2 parts, AISI 316Ti



Ø*	G	L	SW	€/St	Bestell-Nr.
4	G 1/8	33	14	13,78	56.004.348
6	G 1/8	33	14	13,78	56.004.368
4	G 1/4	40	17	14,23	56.004.344
6	G 1/4	40	17	14,23	56.004.364
9	G 1/4	40	17	14,23	56.004.394
4	G 3/8	39	19	15,15	56.005.348
6	G 3/8	39	19	15,15	56.005.368
9	G 3/8	39	19	14,78	56.005.398
6	G 1/2	50	24	22,65	56.005.362
9	G 1/2	50	24	22,65	56.005.392
13	G 1/2	50	24	22,43	56.005.332
13	G 3/4	40	32	32,35	56.005.334
19	G 3/4	40	32	32,35	56.006.394
19	G 1	51	41	89,98	56.006.391
25	G 1	51	41	84,50	56.006.351

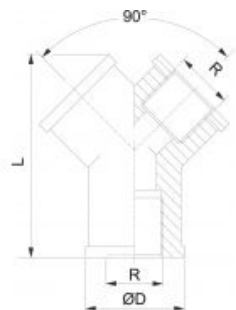


1 = Ø* = Schlauch-Innendurchmesser

Y-Verteiler (Innengewinde) aus 1.4408
Female - Y, AISI 316C



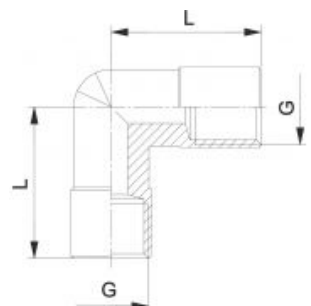
ØD	R	L	€/St	Bestell-Nr.
17	Rp 1/4	39	19,45	46.008.214
21	Rp 3/8	48	18,15	46.008.238
26	Rp 1/2	58	22,00	46.008.212
31	Rp 3/4	69	22,95	46.008.234
38	Rp 1	80	46,65	46.008.210
48	Rp 1 1/4	100	49,30	46.008.211
54	Rp 1 1/2	106	45,02	46.008.221
66	Rp 2	130	72,73	46.008.220
-	Rp 2 1/2	auf Anfrage	172,71	46.008.222
-	Rp 3	auf Anfrage	195,94	46.008.230



Winkelstück 90° mit Innengewinde aus 1.4404
Female elbow, AISI 316L

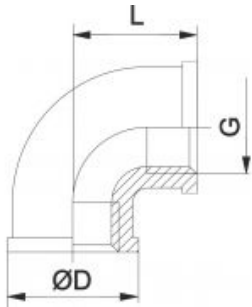


G	L	€/St	Bestell-Nr.
G 1/8	19,0	18,72	46.002.218
G 1/4	23,0	24,54	46.002.214
G 3/8	25,5	30,87	46.002.238
G 1/2	32,0	47,22	46.002.212



Winkelstück 90° mit Innengewinde, zyl. (ISO 228) aus 1.4401/1.4408

Female elbow, AISI 316

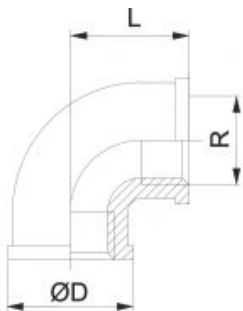


G	ØD	L	€/St	Bestell-Nr.
G 1/8	18,0	18	7,68	96.001.218
G 1/4	21,3	20	7,68	96.002.214
G 3/8	23,5	21	7,68	96.003.238
G 1/2	29,0	27	8,16	96.004.212
G 3/4	35,0	33	12,75	96.005.234
G 1	43,0	38	15,25	96.006.210
G 1 1/4	52,0	45	23,16	96.001.211
G 1 1/2	58,0	50	27,75	96.001.221
G 2	71,0	58	39,98	96.001.220



Winkelstück 90° mit Innengewinde aus 1.4401/1.4408

Female elbow, AISI 316

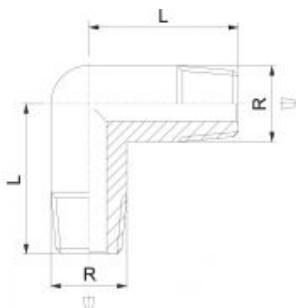


ØD	R	L	€/St	Bestell-Nr.
18,0	Rp 1/8	18	2,06	46.009.218
21,3	Rp 1/4	20	2,08	46.009.214
23,5	Rp 3/8	21	2,46	46.009.238
25,0	Rp 1/2	27	3,12	46.009.212
35,0	Rp 3/4	33	4,29	46.009.234
43,0	Rp 1	38	7,17	46.009.210
52,0	Rp 1 1/4	45	10,41	46.009.211
58,0	Rp 1 1/2	50	13,32	46.009.221
71,0	Rp 2	58	21,51	46.009.220



Winkelstück 90° mit Aussengewinde aus 1.4404

Female elbow, AISI 316L

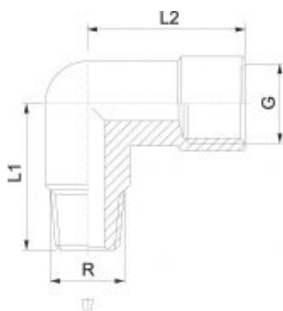


R	L	€/St	Bestell-Nr.
R 1/8	17,0	18,72	46.006.218
R 1/4	21,0	24,54	46.006.214
R 3/8	24,0	30,87	46.006.238
R 1/2	30,0	47,22	46.006.212



Winkelstück 90° mit Innen/Aussengewinde aus 1.4404

Female elbow, AISI 316L



G	R	L1	L2	€/St	Bestell-Nr.
G 1/8	R 1/8	18,0	19,0	18,72	46.007.218
G 1/4	R 1/4	25,0	23,0	24,54	46.007.214
G 3/8	R 3/8	24,0	25,5	30,87	46.007.238
G 1/2	R 1/2	30,0	32,0	47,22	46.007.212

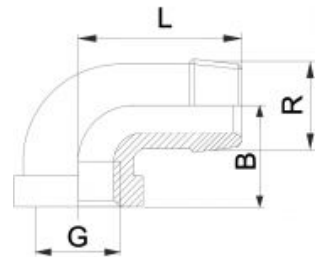


Winkelstück 90° mit Innen/Aussengewinde aus 1.4401/1.4408, 10 bar

Female elbow, AISI 316



G	R	B	L	€/St	Bestell-Nr.
Rp 1/8	R 1/8	19	26	2,46	96.019.218
Rp 1/4	R 1/4	19	28	2,46	96.020.214
Rp 3/8	R 3/8	23	35	2,98	96.021.238
Rp 1/2	R 1/2	29	42	3,45	96.022.212
Rp 3/4	R 3/4	33	50	5,22	96.023.234
Rp 1	R 1	38	52	8,04	96.024.210
Rp 1 1/4	R 1 1/4	45	60	10,40	96.024.241
Rp 1 1/2	R 1 1/2	50	65	15,12	96.024.221
Rp 2	R 2	58	74	21,70	96.024.220

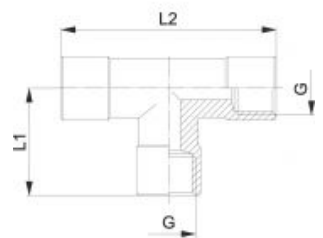


T-Stück mit Innengewinde aus 1.4404

Female tee, AISI 316L



G	L1	L2	€/St	Bestell-Nr.
G 1/8	19,0	38,0	28,86	96.007.218
G 1/4	23,0	46,0	36,57	96.008.214
G 3/8	25,5	51,0	45,42	96.009.238
G 1/2	32,0	64,0	71,85	96.010.212

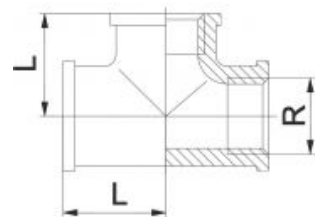


T-Stück mit Innengewinde aus 1.4401/1.4408, 10 bar

Female elbow, AISI 316



R	L	€/St	Bestell-Nr.
Rp 1/8	17	3,01	46.012.218
Rp 1/4	21	3,01	46.012.214
Rp 3/8	24	3,58	46.012.238
Rp 1/2	27	4,12	46.012.212
Rp 3/4	33	5,89	46.012.234
Rp 1	38	8,98	46.012.210
Rp 1 1/4	45	14,40	46.012.241
Rp 1 1/2	50	18,50	46.012.221
Rp 2	58	29,80	46.012.220

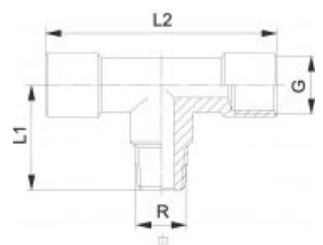


T-Stück mit Innen/Aussengewinde aus 1.4404

Female tee, AISI 316L

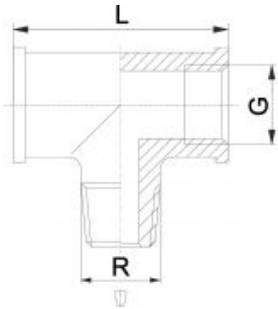


G	R	L1	L2	€/St	Bestell-Nr.
G 1/8	R 1/8	18,0	38,0	28,86	46.017.218
G 1/4	R 1/4	25,5	46,0	36,57	46.017.214
G 3/8	R 3/8	24,0	51,0	45,42	46.017.238
G 1/2	R 1/2	30,0	64,0	71,85	46.017.212



T-Stück mit Innen/Aussengewinde aus 1.4408, 16 bar

Female tee, AISI 316

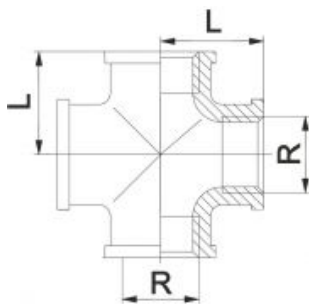


G	R	L	€/St	Bestell-Nr.
Rp 1/8	R 1/8	34	3,78	46.018.218
Rp 1/4	R 1/4	42	5,25	46.018.214
Rp 3/8	R 3/8	47	8,82	46.018.238
Rp 1/2	R 1/2	54	10,26	46.018.212
Rp 3/4	R 3/4	66	15,33	46.018.234



Kreuzstück aus 1.4401/1.4408, 16 bar

Female cross, AISI 316



R	L	€/St	Bestell-Nr.
Rp 1/8	17,0	4,15	96.013.218
Rp 1/4	19,0	4,15	96.014.214
Rp 3/8	23,0	4,53	96.015.238
Rp 1/2	27,5	6,63	96.016.212
Rp 3/4	32,0	9,44	96.017.234
Rp 1	38,0	15,34	96.013.210
Rp 1 1/4	46,0	21,39	96.014.241
Rp 1 1/2	48,0	25,98	96.015.221
Rp 2	56,0	39,42	96.016.220

