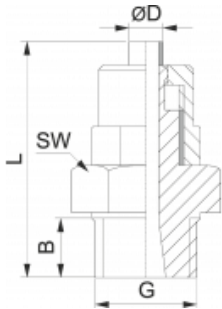


### Gerade Einschraubverschraubung, Kunststoff mit angespritzter Dichtfläche

Quick connector plastic with moulded - on sealing rim

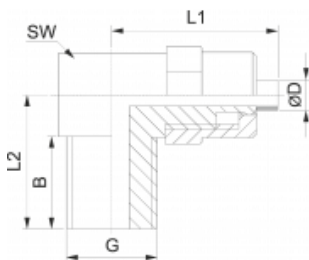


G	ØD	B	L	SW	€/St	Bestell-Nr.
G 1/8	6/4	7	28,0	13	0,48	66.063.518
G 1/4	6/4	9	31,0	17	0,61	66.063.514
G 1/8	8/6	7	29,5	13	0,58	66.064.518
G 1/4	8/6	9	32,0	17	0,61	66.064.514
G 3/8	8/6	11	34,0	19	0,97	66.063.538
G 1/4	10/8	9	34,0	17	0,87	66.065.514
G 3/8	10/8	11	35,5	19	1,04	66.064.538
G 1/4	11,6/9	9	37,5	17	0,92	66.066.514
G 3/8	11,6/9	11	37,5	19	1,09	66.065.538
G 1/4	12/9	9	37,5	17	0,92	66.067.514
G 3/8	12/9	11	37,5	19	1,09	66.067.538



### Winkeleinschraubverschraubung, konisch Kunststoff

L - quick connector taper plastic

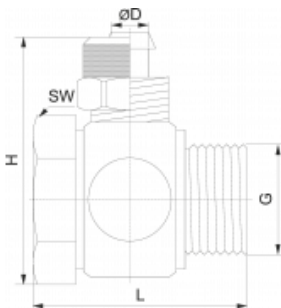


G	ØD	B	L1	L2	SW	€/St	Bestell-Nr.
R 1/8	6/4	8	23	16	11	0,81	66.068.518
R 1/4	6/4	11	24	19	14	0,99	66.068.514
R 1/8	8/6	8	23	17	14	0,94	66.069.518
R 1/4	8/6	11	25	20	14	0,99	66.069.514
R 1/4	11,6/9	13	28	23	17	1,50	66.070.514
R 3/8	11,6/9	13	28	23	17	1,58	66.068.538
R 1/4	12/9	13	28	23	17	1,50	66.079.514
R 3/8	12/9	13	28	23	17	1,58	66.069.538



### Winkelschwenkverschraubung, Kunststoff / Messing vernickelt

L - quick connector plastic / brass nickel - plated



G	ØD	H	L	SW	€/St	Bestell-Nr.
G 1/8	6/4	16,5	28,0	14	1,55	66.071.518
G 1/4	6/4	16,5	32,0	17	1,95	66.071.514
G 1/8	8/6	16,5	28,0	14	1,70	66.072.518
G 1/4	8/6	16,5	32,0	17	2,01	66.072.514

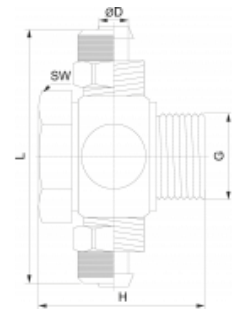


**T - Schwenkverschraubung, Kunststoff / Messing  
vernickelt**

L - quick connector plastic / brass nickel - plated



G	ØD	H	L	SW	€/St	Bestell-Nr.
G 1/8	6/4	28,0	47,0	14	1,92	66.073.518
G 1/4	6/4	32,0	51,0	17	2,36	66.073.514
G 1/8	8/6	28,0	49,0	14	2,06	66.074.518
G 1/4	8/6	32,0	53,0	17	2,38	66.074.514

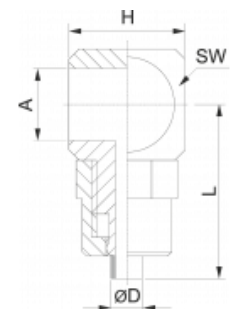


**Ringstück 1 - fach Kunststoff mit angespritzter  
Dichtfläche**

Ring piece plastic with moulded - on sealing rim



G	ØD	A	H	L	SW	€/St	Bestell-Nr.
G 1/8	6/4	10	16,5	23,0	16	0,63	66.075.518
G 1/4	6/4	13	16,5	25,0	20	0,77	66.075.514
G 1/8	8/6	10	16,5	25,0	16	0,77	66.076.518
G 1/4	8/6	13	16,5	26,5	20	0,83	66.076.514

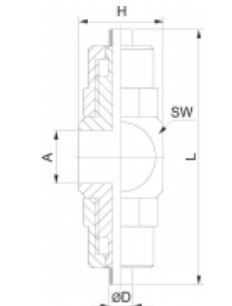


**Ringstück 2- fach Kunststoff mit angespritzter  
Dichtfläche**

Ring piece plastic with moulded - on sealing rim



G	ØD	A	H	L	SW	€/St	Bestell-Nr.
G 1/8	6/4	10	16,5	47,0	16	1,04	66.077.518
G 1/4	6/4	13	16,5	51,0	20	1,26	66.077.514
G 1/8	8/6	10	16,5	49,0	16	1,20	66.078.518
G 1/4	8/6	13	16,5	53,0	20	1,29	66.078.514

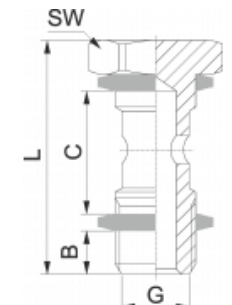


**Hohlschraube 1 - fach für Ringstücke Kunststoff**

Banjo single stem for ring piece plastic



G	B	C	L	SW	€/St	Bestell-Nr.
G 1/8	6	15,0	27	14	0,92	11.097.218
G 1/4	8	17,0	32	17	1,17	11.097.214
G 3/8	9	20,0	36	19	1,60	11.097.238
G 1/2	10	24,0	42	24	2,41	11.097.212

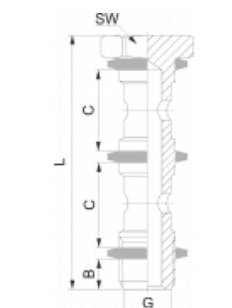


**Hohlschraube 2 - fach für Ringstücke Kunststoff**

Banjo double stem for ring piece plastic

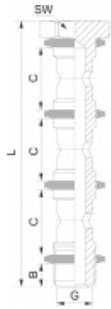


G	B	C	L	SW	€/St	Bestell-Nr.
G 1/8	6	15,0	44,5	14	1,29	11.098.218
G 1/4	8	17,0	50,5	17	1,86	11.098.214
G 3/8	9	20,0	58,0	19	2,47	11.098.238
G 1/2	10	24,0	68,0	24	3,84	11.098.212



### Hohlschraube 3 - fach für Ringstücke Kunststoff

Banjo triple stem for ring piece plastic



G	B	C	L	SW	€/St	Bestell-Nr.
G 1/8	6	15,0	61,0	14	2,06	11.099.218
G 1/4	8	17,0	69,0	17	2,52	11.099.214
G 3/8	9	20,0	80,0	19	3,33	11.099.238
G 1/2	10	24,0	94,0	24	5,05	11.099.212



### Gerader Verbinder Kunststoff

Straight quick connector plastic

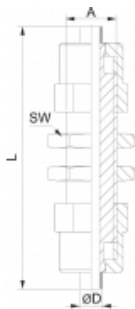


ØD	L	€/St	Bestell-Nr.
6/4	50,0	1,09	66.079.564
8/6	51,0	1,26	66.079.586
11,6/9	60,0	2,06	66.079.511
12/9	60,0	2,06	66.079.512



### Gerader Schottverbinder Kunststoff

Bulkhead quick connector plastic

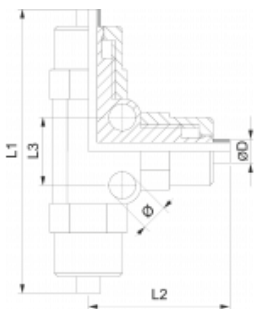


ØD	A	L	SW	€/St	Bestell-Nr.
6/4	M 10 x 1	50,0	14	2,30	66.080.564
8/6	M 12 x 1	51,0	17	3,33	66.080.586
11,6/9	M 16 x 1	60,0	22	4,88	66.080.511
12/9	M 16 x 1	60,0	22	4,88	68.080.512

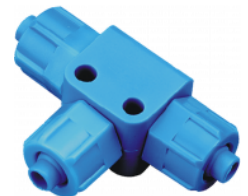


### T - Verbinder Kunststoff

T - distributor plastic

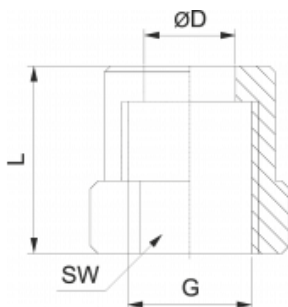


Ø	ØD	L1	L2	L3	€/St	Bestell-Nr.
4,3	6/4	52,0	32	12,0	1,52	66.081.564
4,3	8/6	52,0	34	12,0	1,89	66.081.586
4,3	11,6/9	63,0	40	15,5	2,82	66.081.511
4,3	12/9	63,0	40	15,5	2,82	66.081.512



### Überwurfmutter Kunststoff

Union nut plastic



G	ØD	L	SW	€/St	Bestell-Nr.
M 10 x 1	6/4	13	12	0,15	66.062.264
M 12 x 1	8/6	13	14	0,20	66.062.286
M 14 x 1	10/8	13	17	0,23	66.062.210
M 16 x 1	11,6/9	14	19	0,28	66.062.211
M 16 x 1	12/9	14	19	0,28	66.062.212

