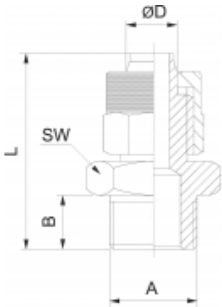


**Gerade Einschraubverschraubung, Gewinde
zylindrisch aus 1.4571**

Parallel straight male adaptor, AISI 316 Ti

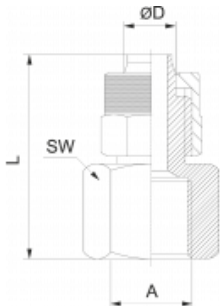


ØD	A	B	L	SW	€/St	Bestell-Nr.
5/3	M5	4,0	20	10	11,47	56.093.635
6/4	M5	4,5	19	10	11,47	59.094.646
6/4	G 1/8	6,5	27	14	9,25	59.095.646
6/4	G 1/4	8,0	29	17	11,21	56.097.646
8/6	G 1/8	6,5	29	14	9,93	56.096.668
8/6	G 1/4	8,0	31	17	11,89	56.098.668
8/6	G 3/8	10,0	33	19	12,30	56.092.668
10/8	G 1/4	10,0	33	17	12,60	56.092.614
10/8	G 3/8	10,0	35	19	14,36	56.092.613
10/8	G 1/2	10,0	36	24	16,80	56.092.612
12/9	G 3/8	10,0	35	19	13,26	56.099.692
12/9	G 1/2	12,0	36	24	15,17	56.092.622
12/10	G 3/8	10,0	35	19	16,10	56.092.623
12/10	G 1/2	12,0	36	24	16,75	56.093.622



Manometerverschraubung aus 1.4571

Straight female adaptor, AISI 316 Ti

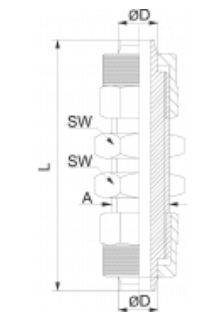


ØD	A	L	SW	€/St	Bestell-Nr.
6/4	G 1/8	28	14	10,53	56.001.668
6/4	G 1/4	28	17	10,53	56.001.664
8/6	G 1/8	28	14	11,21	56.001.688
8/6	G 1/4	28	17	11,21	56.001.684
8/6	G 3/8	28	19	11,89	56.001.683
10/8	G 1/4	28	17	11,92	56.001.614
10/8	G 3/8	30	19	13,96	56.001.613



Schottverschraubung aus 1.4571

Bulkhead connector, AISI 316Ti



ØD	A	L	SW	€/St	Bestell-Nr.
6/4	M10 x 1	40	14	27,00	56.002.664
8/6	M12 x 1	45	17	29,66	56.002.686
10/8	M14 x 1	45	19	32,36	56.002.608

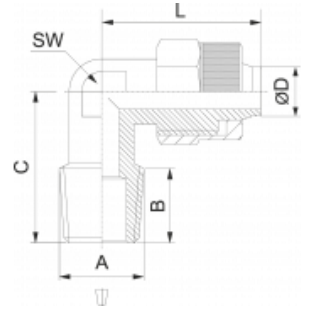


Winkeleinschraubverschraubung, Gewinde konisch aus 1.4305, Überwurfmutter aus 1.4571

Elbow taper male adaptor, AISI 303, nut AISI 316 Ti



ØD	A	B	C	L	SW	€/St	Bestell-Nr.
6/4	R 1/8	8	19	22,0	10	29,91	56.024.568
6/4	R 1/4	10	22	21,5	10	29,94	56.024.564
8/6	R 1/8	8	19	22,0	10	30,62	56.024.588
8/6	R 1/4	10	22	21,5	10	35,58	56.024.584
10/8	R 1/8	8	19	22,0	10	31,40	56.024.518
10/8	R 1/4	10	22	21,5	10	31,40	56.024.514

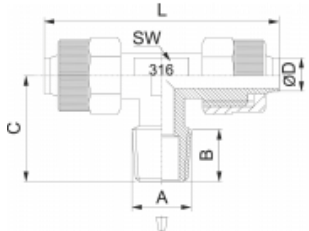


T - Einschraubverschraubung, Gewinde konisch aus 1.4305, Überwurfmutter aus 1.4571

Tee taper adaptor, AISI 303, nut AISI 316 Ti



ØD	A	B	C	L	SW	€/St	Bestell-Nr.
6/4	R 1/8	8	19,0	42	10	46,22	56.025.568
6/4	R 1/4	10	21,5	42	10	55,24	56.025.564
8/6	R 1/8	8	19,0	42	10	57,36	56.025.588
8/6	R 1/4	10	21,5	42	10	57,36	56.025.584
10/8	R 1/8	8	19,0	46	10	59,45	56.025.518
10/8	R 1/4	10	26,0	46	10	59,45	56.025.514

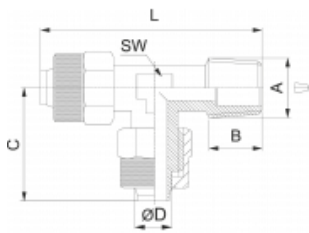


L - Einschraubverschraubung, Gewinde konisch aus 1.4305, Überwurfmutter aus 1.4571

Tee taper adaptor, AISI 303, nut AISI 316Ti



ØD	A	B	C	L	SW	€/St	Bestell-Nr.
6/4	R 1/8	8	21,5	39	10	54,73	56.032.568
6/4	R 1/4	10	21,5	42	10	54,73	56.032.564
8/6	R 1/8	8	21,5	40	10	47,58	56.032.588
8/6	R 1/4	10	21,5	42	10	57,30	56.032.584
10/8	R 1/8	8	23,5	42	10	59,45	56.032.518
10/8	R 1/4	10	23,5	44	10	59,45	56.032.514

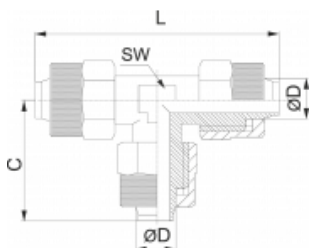


T - Verschraubung aus 1.4305, Überwurfmutter aus 1.4571

Tee connector, AISI 303, nut AISI 316Ti

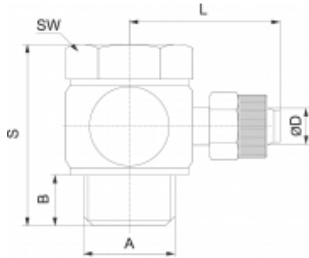


ØD	C	L	SW	€/St	Bestell-Nr.
6/4	21,5	42	10	53,00	56.026.564
8/6	21,5	42	10	69,83	56.026.568
10/8	23,0	46	10	73,08	56.026.508



Winkelschwenkverschraubung aus 1.4571 mit Dichtungen aus Teflon

Complete single banjo adaptor, AISI 316Ti with sealing ring teflon PTFE

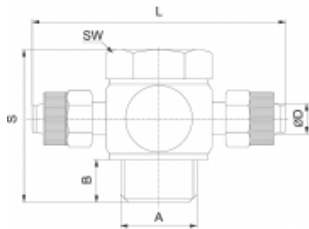


ØD	A	B	L	S	SW	€/St	Bestell-Nr.
6/4	M5	7	18,5	20	8	26,84	56.027.565
6/4	G 1/8	8	21,0	28	14	44,48	56.027.568
6/4	G 1/4	10	23,0	29	17	37,67	56.027.564
8/6	G 1/8	8	21,0	28	14	34,83	56.027.588
8/6	G 1/4	10	23,0	29	17	38,51	56.027.584
8/6	G 3/8	12	25,5	31	22	49,72	56.027.583



T - Schwenkverschraubung aus 1.4571 mit Dichtungen aus Teflon

Complete double banjo adaptor, AISI 316Ti with sealing ring teflon PTFE

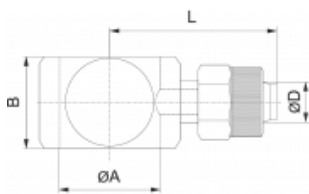


ØD	A	B	L	S	SW	€/St	Bestell-Nr.
6/4	M5	7	37	20	8	63,78	56.028.565
6/4	G 1/8	8	42	28	14	40,40	56.028.568
6/4	G 1/4	10	46	29	17	41,18	56.028.564
8/6	G 1/8	8	42	28	14	39,51	56.028.588
8/6	G 1/4	10	46	29	17	42,54	56.028.584
8/6	G 3/8	12	51	31	22	108,33	56.028.583



Ringstück 1 - fach aus 1.4571

Single banjo body, AISI 316Ti



ØD	A	B	L	€/St	Bestell-Nr.
6/4	M5	11	18,5	14,54	56.029.556
6/4	G 1/8	16	21,0	31,73	56.029.586
6/4	G 1/4	15	23,0	22,30	56.023.546
8/6	G 1/8	16	21,0	22,08	56.029.588
8/6	G 1/4	15	23,0	23,13	56.029.548
8/6	G 3/8	15	25,5	25,50	56.030.588

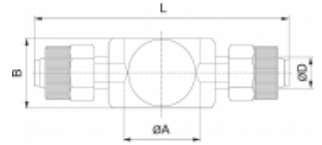


Ringstück 2-fach aus 1.4571

Double banjo body, AISI 316Ti



ØD	A	B	L	€/St	Bestell-Nr.
6/4	M5	11	37	51,48	56.030.556
6/4	G 1/8	16	42	27,64	56.030.586
6/4	G 1/4	15	46	25,80	56.030.564
8/6	G 1/8	16	42	26,76	56.031.588
8/6	G 1/4	15	46	27,17	56.030.548
8/6	G 3/8	15	51	89,96	56.033.588

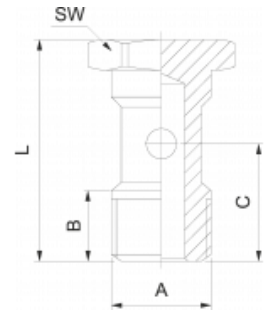


**Hohlschraube 1-fach aus 1.4571 mit 2 Teflon
Dichtringen**

Banjo single stem AISI 316Ti incl. 2 sealing ring teflon PTFE



A	B	C	L	SW	€/St	Bestell-Nr.
M5	5,5	11	20	8	11,79	56.002.605
G 1/8	11,0	17	28	14	12,25	56.002.618
G 1/4	11,0	17	29	17	14,87	56.002.614
G 3/8	11,0	18	31	22	17,87	56.002.638

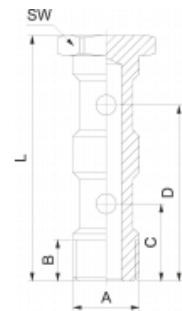


**Hohlschraube 2-fach aus 1.4571 mit 3 Teflon
Dichtringen**

Banjo double stem AISI 316Ti incl. 3 sealing ring teflon PTFE



A	B	C	D	L	SW	€/St	Bestell-Nr.
M5	7,0	11,5	22,5	31	8	16,73	56.030.605
G 1/8	9,5	15,5	31,5	44	14	17,44	56.030.618
G 1/4	11,0	17,0	34,0	46	17	19,05	56.029.614

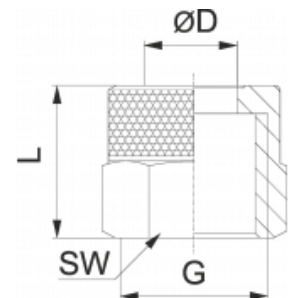


Überwurfmutter aus 1.4571

Locking nut, AISI 316Ti



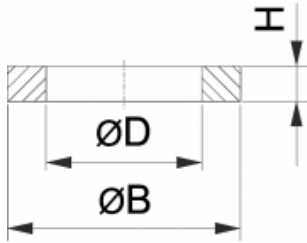
G	ØD	L	SW	€/St	Bestell-Nr.
M8 x 1	6/4	10	10	5,12	56.022.364
M10 x 1	6/4	12	12	2,65	56.026.364
M12 x 1	8/6	12	14	3,33	56.022.386
M14 x 1	10/8	12	17	4,03	56.022.318
M16 x 1	10/8	13	19	5,39	56.021.318





Teflon Dichtringe, Temperaturbereich: -200°C bis max. +200°C

Sealing ring teflon PTFE, Temperature range -200°C to max. +200°C

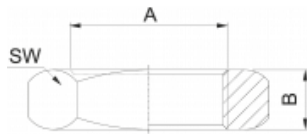


für Gewinde for thread	ØD	ØB	H	€/St	Bestell-Nr.
M5	5,3	8,0	1	0,10	66.008.205
G 1/8	10,3	13,0	2	0,16	66.008.218
G 1/4	13,5	18,0	2	0,24	66.008.214
G 3/8	17,3	21,5	2	0,28	66.008.238
G 1/2	21,3	28,0	2	0,48	66.008.212
G 3/4	26,5	33,0	2	0,58	66.008.234
G1	33,5	39,1	2	0,82	66.008.210



Kontermutter aus 1.4571 für Schottverschraubung

Nut, AISI 316Ti, for bulkhead connector

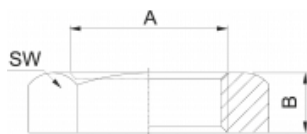


A	B	SW	€/St	Bestell-Nr.
M10 x 1	4	14	2,65	56.012.210
M10 x 1	4	17	3,78	56.012.212
M10 x 1	5	19	4,20	56.012.214



Kontermutter zylindrisch aus 1.4571 / 1.4408

NUt with cylidrical thread, AISI 316Ti / AISI 316



A	B	€/St	Bestell-Nr.
G 1/8	19	2,62	56.011.218
G 1/4	22	1,84	56.010.214
G 3/8	27	3,07	56.011.238
G 1/2	32	4,13	56.011.212
G 3/4	36	5,72	56.011.234
G 1	46	12,32	56.011.210
Rp 1 1/4*	52	5,22	56.011.211
Rp 1 1/2*	58	0,00	56.012.211 ¹
Rp 2*	72	8,06	56.011.220
Rp 2 1/2*	90	16,48	56.011.221
Rp 3*	102	14,98	56.011.230



1 = * aus Wekstoff 1.4408 / AISI 316

Kontermutter metrisch aus 1.4571

Nut with metric thread, AISI 316Ti



A	SW	€/St	Bestell-Nr.
M4	7	0,06	56.013.204
M6	10	0,10	56.013.206
M8	13	0,16	56.013.208
M10 x 1	17	0,61	56.013.210
M10 x 1,25	17	0,93	56.014.210
M12 x 1	19	0,46	56.013.212
M12 x 1,25	19	0,91	56.014.212
M16 x 1,5	24	1,12	56.013.216
M20 x 1,5	30	1,60	56.013.220
M22 x 1,5	32	5,65	56.013.222
M27 x 2	41	8,69	56.013.227
M30 x 1,5	36	43,50	56.030.230
M38 x 1,5	46	41,60	56.013.238
M45 x 1,5	60	78,90	56.013.245
M55 x 1,5	70	97,20	56.013.255
M60 x 2	90	148,00	56.013.230

