



■ Technische Daten:

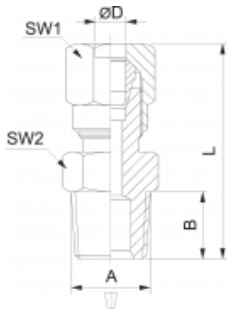
Material: Messing vernickelt
 Gewinde: zyl. Gew. DIN EN ISO 228
 kon. Gew. DIN EN 10226 (ISO7/DIN 2999)
 Größen: G1/8 - G1/2, R 1/8 - R 1/2
 Medium: Wasser, Öl, Druckluft, Hydraulik-Medien.
 Pneumatische und öldynamische
 Betriebsstoffe.
 Temperatur: max. 150° Grad
 Betriebsdruck: max. 60 bar

■ Technical data:

Material: brass nickel plated
 Threads: parallel thread, DIN EN ISO 228
 taper thread, DIN EN 10226
 (ISO7/DIN 2999)
 Sizes: G1/8 - G1/2, R 1/8 - R 1/2
 Media: Pneumatics, oil-hydraulic and
 hydraulic circuits.
 Temperature: max. 150° Grad
 Operating pressure: max. 60 bar

Gerade Einschraubverschraubung, konisch

Taper straight male adaptor



ØD	A	B	L	SW1	SW2	€/St	Bestell-Nr.
4	R 1/8	8,0	27,0	10	10	1,08	11.072.504
6	R 1/8	8,0	28,0	12	12	1,14	11.072.506
6	R 1/4	11,0	32,5	12	14	1,27	11.073.506
8	R 1/8	7,5	29,5	14	12	1,27	11.072.508
8	R 1/4	11,0	33,0	14	14	1,34	11.073.508
8	R 3/8	11,5	33,0	14	17	1,73	11.074.508
10	R 1/4	11,0	37,5	19	17	1,99	11.072.510
10	R 3/8	11,5	38,0	19	17	2,18	11.073.510
10	R 1/2	14,0	40,5	19	22	2,21	11.072.512
12	R 3/8	11,5	39,0	22	19	2,45	11.073.512
12	R 1/2	14,0	41,0	22	22	2,89	11.074.512
14	R 1/2	14,0	44,5	27	22	3,72	11.072.514
15	R 1/2	14,0	44,5	27	22	3,72	11.072.515
16	R 1/2	14,0	45,0	30	24	4,42	11.072.516
18	R 1/2	14,0	45,0	32	26	4,94	11.072.518

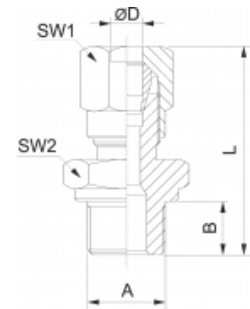


Gerade Einschraubverschraubung, zylindrisch

Parallel straight male adaptor



ØD	A	B	L	SW1	SW2	€/St	Bestell-Nr.
4	G 1/8	6,0	25,0	10	14	1,01	11.073.504
6	G 1/8	6,0	25,0	12	13	1,01	11.074.506
6	G 1/4	8,0	29,5	12	17	2,31	11.075.506
8	G 1/8	6,0	27,5	14	14	1,11	11.075.508
8	G 1/4	8,0	30,0	14	17	1,34	11.076.508
10	G 1/4	8,0	34,5	19	17	1,66	11.074.510
10	G 3/8	9,0	36,0	19	19	1,92	11.075.510
12	G 3/8	10,0	40,0	22	22	4,01	11.075.512
12	G 1/2	12,0	43,0	22	22	4,17	11.076.512

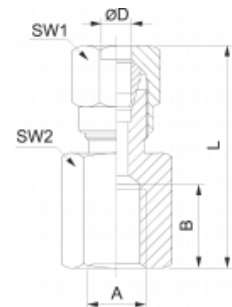


Manometerverschraubung

Female straight adaptor

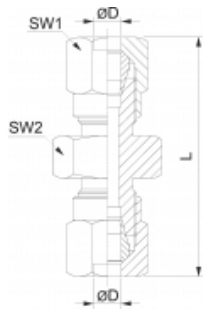


ØD	A	B	L	SW1	SW2	€/St	Bestell-Nr.
4	G 1/8	8,0	24,5	10	14	1,47	11.074.504
6	G 1/8	8,0	26,0	12	14	1,50	11.076.506
6	G 1/4	11,0	30,5	12	17	1,70	11.077.508
8	G 1/8	8,0	26,5	14	14	1,59	11.078.508
8	G 1/4	11,0	31,0	14	17	1,73	11.079.508
8	G 3/8	11,5	31,0	14	20	2,05	11.080.508
10	G 1/4	11,0	35,5	19	17	2,27	11.076.510
10	G 3/8	11,5	36,5	19	20	2,50	11.077.510
12	G 3/8	11,5	34,5	22	20	2,73	11.077.512
12	G 1/2	14,0	37,0	22	24	3,07	11.078.512
14	G 1/2	14,0	40,0	27	24	3,90	11.073.514
15	G 1/2	14,0	38,0	27	24	3,90	11.073.515
16	G 1/2	14,0	40,5	30	24	4,36	11.073.516
18	G 1/2	14,0	40,0	31	26	4,94	11.073.518



Gerader Verbinder

Straight connector

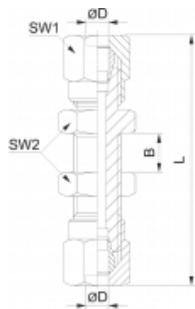


ØD	L	SW1	SW2	€/St	Bestell-Nr.
4	34,0	10	10	1,79	11.075.504
6	35,0	12	12	1,99	11.077.506
8	37,0	14	14	2,21	11.081.508
10	46,0	19	17	3,39	11.078.510
12	46,0	22	19	4,04	11.079.512
14	53,0	27	24	6,04	11.074.514
15	50,0	27	24	5,92	11.074.515
16	53,5	30	27	7,19	11.074.516
18	53,0	32	27	7,70	11.074.518



Schottverschraubung

Bulkhead adaptor

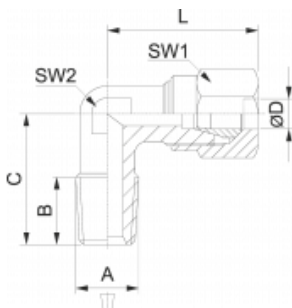


ØD	Bmax	L	SW1	SW2	€/St	Bestell-Nr.
6	15,5	51,5	12	14	2,41	11.078.506
8	16,5	55,5	14	16	2,73	11.082.508
10	15,5	62,5	19	19	4,49	11.079.510
12	16,0	64,5	22	22	7,48	11.080.512
15	18,0	69,5	27	25	11,38	11.075.515



Winkel - Einschraubverschraubung, konisch

Elbow male adaptor



ØD	A	B	C	L	SW1	SW2	€/St	Bestell-Nr.
4	R 1/8	8,0	16,0	21,0	10	9	1,40	11.076.504
6	R 1/8	8,0	16,0	23,0	12	9	1,50	11.079.506
6	R 1/4	11,0	20,0	24,5	12	11	1,59	11.080.506
8	R 1/8	8,0	17,0	24,0	14	11	1,82	11.083.508
8	R 1/4	11,0	20,0	24,0	14	11	1,85	11.084.508
8	R 3/8	11,5	24,0	27,0	14	13	2,21	11.085.508
10	R 1/4	11,0	23,5	32,0	19	13	2,53	11.080.510
10	R 3/8	11,5	24,0	32,0	19	13	2,56	11.081.510
10	R 1/2	14,0	28,5	34,0	19	15	4,17	11.082.510
12	R 3/8	11,5	25,0	34,5	22	15	3,10	11.081.512
12	R 1/2	14,0	28,5	34,5	22	15	3,44	11.082.512
14	R 1/2	14,0	30,0	38,0	27	17	4,69	11.075.514
15	R 1/2	14,0	30,0	38,0	27	17	4,77	11.076.515
16	R 1/2	14,0	31,5	39,5	30	19	5,69	11.075.516
18	R 1/2	14,0	34,0	44,0	32	22	7,33	11.075.518

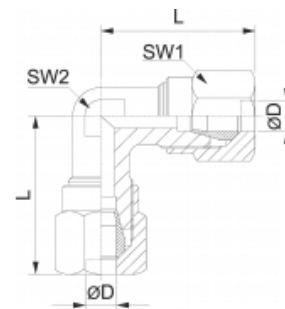


Winkelverbinder

Elbow connector



ØD	L	SW1	SW2	€/St	Bestell-Nr.
4	21,0	10,0	9	0,66	11.077.504
6	23,0	12,0	9	2,08	11.081.506
8	24,0	14,0	11	2,45	11.086.508
10	32,0	19,0	13	10,00	11.083.510
12	34,5	22,0	15	4,29	11.083.512
14	38,0	27,0	17	6,60	11.076.514
15	38,0	27,0	17	6,60	11.077.515
16	39,5	30,0	19	8,20	11.076.516
18	44,0	32,0	22	9,89	11.076.518

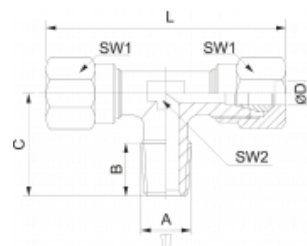


T-Einschraubverschraubung, konisch

Tee male adaptor (taper) - centre leg

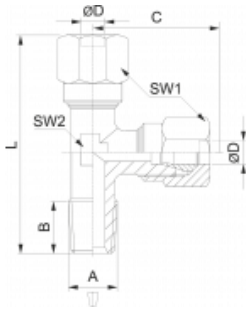


ØD	A	B	C	L	SW1	SW2	€/St	Bestell-Nr.
4	R 1/8	8,0	16,0	42,0	10	9	2,11	11.078.504
6	R 1/8	8,0	16,0	46,0	12	9	2,27	11.082.506
6	R 1/4	11,0	20,0	48,0	12	11	2,41	11.083.506
8	R 1/8	8,0	17,0	48,0	14	11	2,67	11.087.508
8	R 1/4	11,0	20,0	48,0	14	11	2,73	11.088.508
8	R 3/8	11,5	24,0	54,0	14	13	3,32	11.089.508
10	R 1/4	11,0	23,5	64,0	19	13	4,17	11.084.510
10	R 3/8	11,5	24,0	64,0	19	13	4,17	11.085.510
12	R 3/8	11,5	25,5	69,0	22	15	4,88	11.084.512
12	R 1/2	14,0	28,5	69,0	22	14	4,88	11.085.512
14	R 1/2	14,0	30,0	76,0	27	17	7,52	11.077.514
15	R 1/2	14,0	30,0	76,0	27	17	7,52	11.078.515
16	R 1/2	14,0	31,5	79,0	30	19	9,00	11.077.516
18	R 1/2	14,0	34,0	88,0	32	22	11,51	11.077.518



L - Einschraubverschraubung, konisch

Tee male adaptor (taper) - off-set leg

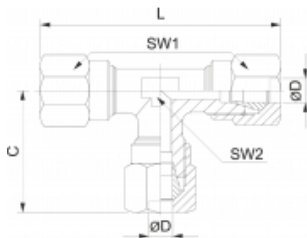


ØD	A	B	C	L	SW1	SW2	€/St	Bestell-Nr.
4	R 1/8	8,0	21,0	37,0	10	9	2,11	11.079.504
6	R 1/8	8,0	23,0	39,0	12	9	2,27	11.084.506
6	R 1/4	11,0	24,5	44,5	12	11	2,41	11.085.506
8	R 1/8	8,0	24,0	41,0	14	11	2,67	11.090.508
8	R 1/4	11,0	24,0	44,0	14	12	2,73	11.091.508
8	R 3/8	11,5	27,0	51,0	14	13	3,32	11.092.508
10	R 1/4	11,0	32,0	55,5	19	13	4,17	11.086.510
10	R 3/8	11,5	32,0	56,0	19	13	4,17	11.087.510
12	R 3/8	11,5	34,5	60,0	22	15	4,88	11.086.512
12	R 1/2	14,0	34,5	63,0	22	15	4,88	11.087.512
14	R 1/2	14,0	38,0	68,0	27	17	7,52	11.078.514
15	R 1/2	14,0	38,0	68,0	27	17	7,52	11.079.515
16	R 1/2	14,0	39,5	71,0	30	19	9,00	11.078.516
18	R 1/2	14,0	44,0	78,0	32	22	11,51	11.078.518



T- Verschraubung

Tee connector



ØD	C	L	SW1	SW2	€/St	Bestell-Nr.
4	21,0	42,0	10	9	2,64	11.080.504
6	23,0	46,0	12	9	2,83	11.086.506
8	24,0	48,0	14	11	3,39	11.093.508
10	32,0	64,0	19	13	4,67	11.088.510
12	34,5	69,0	22	15	5,99	11.088.512
14	38,0	79,0	27	17	13,98	11.079.514
15	38,0	76,0	27	17	9,46	11.080.515
16	39,5	79,0	30	19	9,46	11.079.516
18	44,0	88,0	32	22	11,48	11.079.518

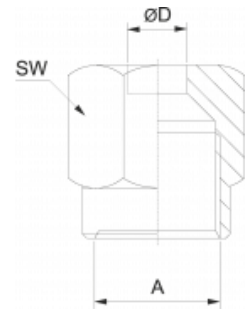


Überwurfmutter

Nut



ØD	A	SW	€/St	Bestell-Nr.
4	M 8x1	10	0,28	11.072.204
6	M 10x1	12	0,34	11.072.206
8	M 12x1	14	0,37	11.072.208
10	M 16x1,5	19	0,72	11.072.210
12	M 18x1,5	22	0,83	11.072.212
14	M 22x1,5	27	1,46	11.072.214
15	M 22x1,5	27	1,46	11.072.215
16	M 24x1,5	30	1,77	11.072.216
18	M 26x1,5	32	1,99	11.072.218

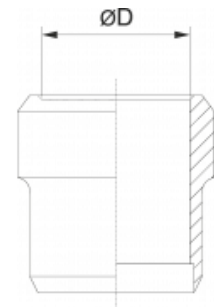


Schneidring

Ogive



ØD	€/St	Bestell-Nr.
4	0,17	16.109.204
6	0,17	16.109.206
8	0,19	16.109.208
10	0,29	16.109.210
12	0,32	16.109.212
14	0,32	16.109.214
15	0,32	16.109.215
16	0,36	16.109.216
18	0,43	16.109.218

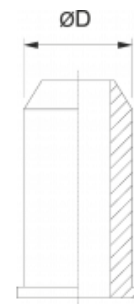


Verstärkungshülse

Support bush

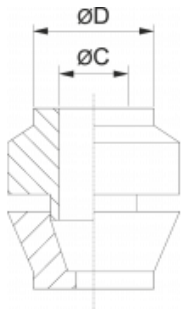


ØD	€/St	Bestell-Nr.
2	0,10	16.110.202
4	0,14	16.110.204
6	0,26	16.110.206
8	0,29	16.110.208
9	0,31	16.110.209
10	0,36	16.110.210
11	0,36	16.110.211
12	0,54	16.110.212
14	0,57	11.110.214
18	0,65	16.110.218



Reduzierung, 2- teilig

Reduction

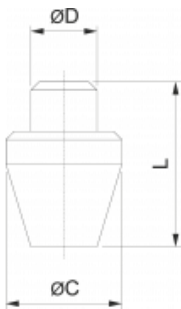


ØD	ØC	€/St	Bestell-Nr.
6	4	0,65	16.109.506
8	6	0,65	16.109.508
12	8	0,65	16.109.512



Stopfen

Plug

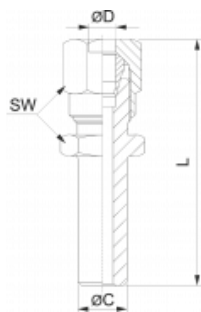


ØD	ØC	€/St	Bestell-Nr.
4	6	0,49	16.111.204
6	8	0,49	16.111.206



Adapter

Adapter

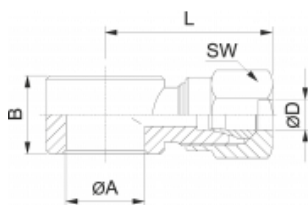


ØD	ØC	L	SW	€/St	Bestell-Nr.
6	8	34,0	12	1,56	11.087.506
8	10	42,0	12	1,95	11.094.508



Ringstück

Single banjo body

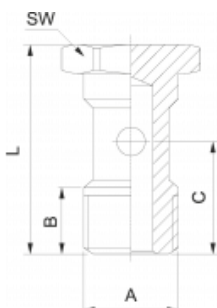


G	ØD	A	B	L	SW	€/St	Bestell-Nr.
G 1/8	4	10,0	14,5	24,5	10	1,59	11.081.504
G 1/8	6	10,0	14,5	26,5	12	1,70	11.088.506
G 1/4	6	13,3	14,5	28,5	12	1,73	11.089.506
G 1/8	8	10,0	14,5	25,5	14	1,76	11.095.508
G 1/4	8	13,3	14,5	28,0	14	1,82	11.096.508



Hohlschraube 1-fach

Banjo single stern



A	B	C	L	SW	€/St	Bestell-Nr.
G 1/8	7,5	15,0	28,0	14	0,94	11.073.218
G 1/4	9,0	16,5	29,5	17	1,20	11.073.214
G 3/8	13,5	17,5	31,5	24	1,62	11.073.238

