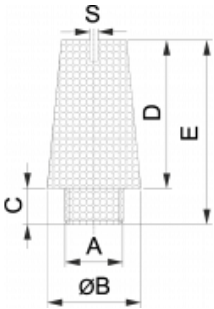


**[SC] Schalldämpfer aus Sinterbronze mit gesintertem Gewinde und Schlitz**

Integral silencer with slot

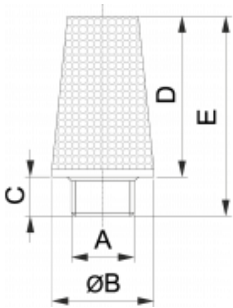


A	ØB	C	D	E	S	€/St	Bestell-Nr.
G 1/8	11,0	5,5	15,5	21	1,5	0,83	16.073.218
G 1/4	14,0	8,5	18,5	27	2,0	1,35	16.073.214
G 3/8	18,0	11,0	25,0	36	2,0	2,81	16.074.238
G 1/2	23,5	11,0	32,0	43	2,0	4,69	16.073.212
G 3/4	29,5	12,5	52,0	65	8,60	8,96	16.073.234
G 1	35,0	15,0	60,0	75	4,0	14,60	16.073.210



**[SC] Schalldämpfer aus Sinterbronze mit Messinggewinde**

Sintered bronze silencer

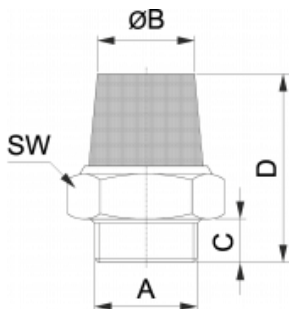


A	ØB	C	D	E	€/St	Bestell-Nr.
M 5	6	4,5	8,5	13	1,01	16.070.205
G 1/8	12	6,0	15,0	21	1,18	16.071.218
G 1/4	15	6,0	19,0	25	1,66	16.072.214
G 3/8	19	8,0	28,0	36	3,11	16.073.238
G 1/2	23	10,0	33,0	43	4,51	16.074.212
G 3/4	30	13,0	40,0	53	8,44	16.075.234
G 1	38	15,0	48,0	63	13,64	16.076.210



**[SEM] Schalldämpfer aus Sinterbronze mit Messinggewinde und Sechskant**

Sintered bronze silencer with brass thread and brass hexagon



A	ØB	C	D	SW	€/St	Bestell-Nr.
M 5	5,0	4	15	8	1,54	16.098.205
G 1/8	8,0	6	20	13	1,54	16.098.218
G 1/4	11,0	8	25	16	2,03	16.098.214
G 3/8	13,5	9	29	19	3,73	16.098.238
G 1/2	17,0	11	35	24	4,94	16.098.212
G 3/4	22,0	13	39	30	9,72	16.098.234
G 1	29,0	15	45	36	15,15	16.098.210

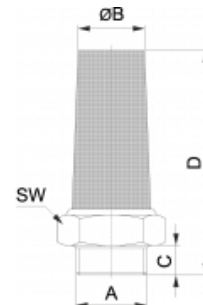


### [SE] Schalldämpfer aus Sinterbronze mit Messinggewinde und Sechskant

Sintered bronze silencer with brass thread and brass hexagon



A	ØB	C	D	SW	€/St	Bestell-Nr.
M 5	5	4	22	8	1,66	16.077.205
G 1/8	7	6	29	13	1,66	16.078.218
G 1/4	9	8	32	16	2,29	16.079.214
G 3/8	13	9	43	19	4,10	16.080.238
G 1/2	16	11	53	24	5,37	16.081.212
G 3/4	20	13	53	30	10,37	16.082.234
G 1	25	15	66	36	16,72	16.083.210

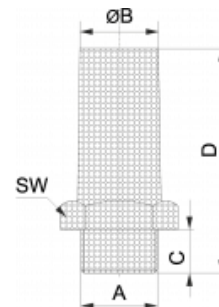


### [SDS] Schalldämpfer aus Sinterbronze mit Sechskant

Integral silencer with hexagonal wrench



A	ØB	C	D	SW	€/St	Bestell-Nr.
G 1/8	8,0	6	28,0	13	1,82	16.112.218
G 1/4	12,0	8	33,5	17	2,66	16.112.214
G 3/8	15,0	10	36,5	22	3,80	16.112.238
G 1/2	19,5	12	44,0	27	6,34	16.112.212
G 3/4	23,0	14	54,0	32	10,37	16.112.234
G 1	27,5	16	65,5	41	16,26	16.112.210
G 2	50,0	16	74,0	70	106,61	16.112.220

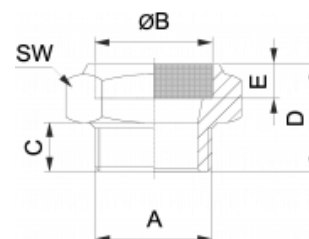


### [SEP] Schalldämpfer mit Sinterbronze, flach

Sintered bronze silencer, flat

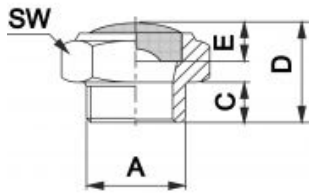


A	ØB	C	D	E	SW	€/St	Bestell-Nr.
M 5	6,5	3,5	8	3	8	0,89	16.084.205
G 1/8	11,0	6,0	13	4	13	0,89	16.085.218
G 1/4	14,0	8,0	16	4	16	1,11	16.086.214
G 3/8	17,0	9,0	18	4	19	2,09	16.087.238
G 1/2	22,0	11,0	20	4	24	2,98	16.088.212
G 3/4	28,0	13,0	24	4	30	5,37	16.089.234
G 1	34,0	15,0	27	4	36	9,07	16.090.210
G 1 1/4	44,0	20,0	36	4	54	31,95	16.090.211
G 1 1/2	44,0	24,0	40	4	54	38,41	16.090.212



### [SFE] Schalldämpfer mit Drahtgeflecht

Silencer SFE with inox wire

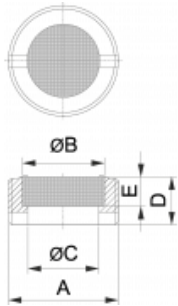


A	C	D	E	SW	€/St	Bestell-Nr.
M5	3,5	8,5	3	8	1,85	16.117.205
G 1/8	6,0	16,0	4	13	1,77	16.117.218
G 1/4	8,0	19,0	4	16	2,17	16.117.214
G 3/8	9,0	21,0	4	19	2,45	16.117.238
G 1/2	10,0	22,0	4	24	3,54	16.117.212
G 3/4	10,0	27,0	4	30	11,98	16.117.234
G 1	15,0	29,0	4	36	22,40	16.117.210



### [SP] Schalldämpfer

Silencer

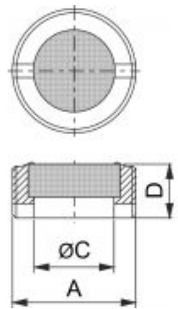


A	ØB	C	D	E	€/St	Bestell-Nr.
G 1/8	6	6	4,5	3	1,08	16.091.218
G 1/4	8	8	6	3	1,21	16.092.214
G 3/8	10	9,5	7,5	3	2,42	16.093.238
G 1/2	15	12	9	4	3,33	16.094.212
G 3/4	20	17	8,5	4	5,76	16.095.234
G 1	26	23	10	4	9,54	16.096.210



### [SPX] Schalldämpfer aus Edelstahl 1.4301 mit Drahtgeflecht

Stainless steel silencer with wire, AISI 304



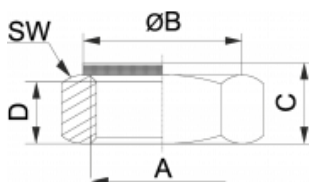
A	C	D	€/St	Bestell-Nr.
G 1/8	6	4,5	5,75	96.091.218
G 1/4	8	6,5	6,50	96.092.214
G 3/8	9,5	7,5	13,03	96.093.238
G 1/2	12,5	8,5	18,65	96.094.212

1 = Lieferzeit 6-8 Wochen, Mindestabnahme 200 Stück



### [SEF] Schalldämpfer mit Innengewinde , Sechskant

Brass female silencer with hexagon



A	ØB	C	D	SW	€/St	Bestell-Nr.
M 5	3,5	7,5	4,0	-	1,41	16.114.205
G 1/8	11,0	10,5	6,0	13	1,41	16.114.218
G 1/4	14,0	11,0	6,0	16	1,65	16.114.214
G 3/8	17,0	12,0	7,5	19	2,55	16.114.238
G 1/2	22,0	13,0	8,0	24	3,98	16.114.212

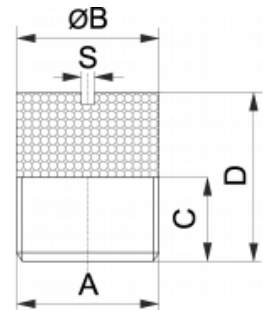


**[STT] Schalldämpfer aus Sinterbronze mit Messinggewinde und Schlitz**

Sintered bronze silencer with brass thread and slot



A	ØB	C	D	S	€/St	Bestell-Nr.
G 1/8	10	6	12	1,5	0,97	16.115.218
G 1/4	13	6	15	1,5	1,33	16.115.214
G 3/8	17	7	17	1,5	2,29	16.115.238
G 1/2	21	10	20	1,5	3,32	16.115.212
G 3/4	26	13	22	1,5	5,41	16.115.234
G 1	33	14	25	1,5	9,16	16.112.210

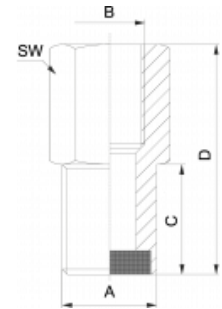


**[AM] Schalldämpfer mit Innen- und Außengewinde, Gewinde Messing, Sinter Inox**

Silencer with female / male thread, brass thread, sinter inox



A	B	C	D	SW	€/St	Bestell-Nr.
G 1/8	G 1/8	10	25	14	4,71	16.116.218
G 1/4	G 1/4	15	36	19	6,77	16.116.214
G 3/8	G 3/8	27	45	27	11,75	16.116.238
G 1/2	G 1/2	27	50	30	17,16	16.116.212

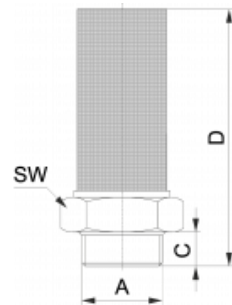


**[SEX] Schalldämpfer aus Edelstahl**

Stainless steel silencer



A	C	D	SW	€/St	Bestell-Nr.
M 5	3,5	16	8	7,46	96.024.205
G 1/8	6,0	25	13	9,88	96.025.218
G 1/4	8,0	33	16	12,46	96.026.214
G 3/8	9,0	40	19	17,41	96.027.238
G 1/2	10,0	47	24	24,83	96.028.212
G 3/4	10,0	56	30	31,02	96.029.234
G 1	15,0	64	36	43,48	96.030.210

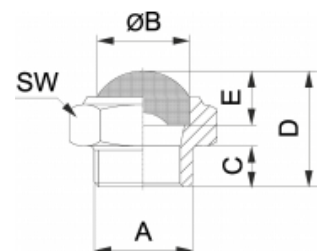


**[SFEX] Schalldämpfer aus Edelstahl**

Stainless steel silencer

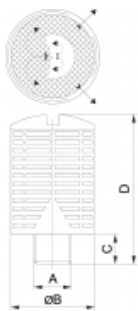


A	ØB	C	D	E	SW	€/St	Bestell-Nr.
M 5	6,0	3,5	8	3	8	5,42	96.031.205
G 1/8	11,0	6,0	16	4	13	8,01	96.032.218
G 1/4	14,0	8,0	19	4	16	10,64	96.033.214
G 3/8	17,0	9,0	21	4	19	14,79	96.034.238
G 1/2	22,0	10,0	23	4	24	23,16	96.035.212
G 3/4	28,0	10,0	27	4	30	28,36	96.036.234
G 1	34,0	15,0	29	4	36	39,06	96.037.210



### [SPL] Schalldämpfer aus Kunststoff

#### Plastic silencer

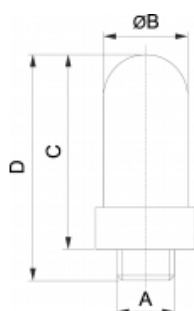


A	ØB	C	D	€/St	Bestell-Nr.
G 1/8	15,0	6	32,5	1,34	66.056.218
G 1/4	19,5	8	43,0	1,67	66.057.214
G 3/8	24,5	11	58,0	3,27	66.058.238
G 1/2	24,5	11	58,0	3,27	66.059.212
G 3/4	48,0	18	115,0	13,12	66.060.234
G 1	48,0	18	115,0	13,12	66.061.210



### Schalldämpfer aus Vyon

#### Vyon silencer

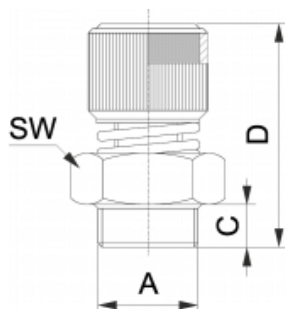


A	ØB	C	D	€/St	Bestell-Nr.
M 5	6,5	19,0	23,0	2,15	66.055.205
G 1/8	12,5	28,0	34,0	1,97	66.055.218
G 1/4	15,5	35,5	42,5	2,46	66.055.214
G 3/8	18,5	56,0	67,5	3,41	66.055.238
G 1/2	23,5	67,0	78,0	4,15	66.055.212
G 3/4	38,5	115,5	131,0	22,16	66.055.234
G 1	49,0	140,5	160,0	26,30	66.055.210



### [SVE] Drosselventil mit Schalldämpfer, Sinter-flach

#### Throttle control silencer

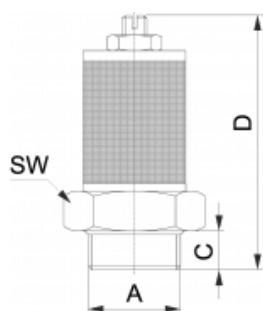


A	C	Dmin	Dmax	SW	€/St	Bestell-Nr.
G 1/8	6	26	28	13	3,27	16.097.218
G 1/4	8	30	32	15	3,50	16.097.214
G 3/8	10	35	38	18	5,96	16.099.238
G 1/2	11	36	39	22	6,18	16.100.212
G 3/4	12	45	50	30	16,13	16.101.234
G 1	12	45	50	36	23,59	16.102.210



### [SVL] Drosselventil mit Schalldämpfer, Sinter-lang

#### Throttle control silencer



A	C	Dmin	Dmax	SW	€/St	Bestell-Nr.
M 5	3,5	16	21	8	5,60	16.103.205
G 1/8	8,0	38	44	16	5,60	16.103.218
G 1/4	9,0	39	45	16	5,60	16.104.214
G 3/8	10,0	47	60	22	11,22	16.105.238
G 1/2	11,0	48	61	22	11,22	16.106.212
G 3/4	11,0	68	92	30	19,89	16.107.234
G 1	11,0	68	92	36	28,59	16.108.210

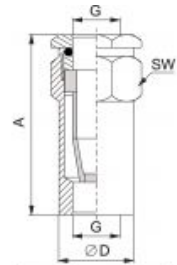


### Inline-Filter mit Innengewinde

In-line filter with female thread



G	ØD	A	SW	Durchfluss	€/St	Bestell-Nr.
G 1/8	16	36	17	ca. 500l/min	13,44	11.173.518
G 1/4	18	41	19	ca. 900l/min	17,19	11.173.514
G 3/8	22	52	24	ca. 1.600l/min	24,38	11.173.538
G 1/2	28	63	28	ca. 2.800l/min	44,18	11.173.512



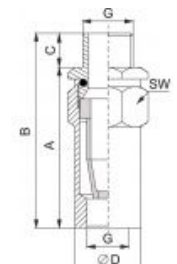
▲ empfohlene Fließrichtung  
advised flow direction

### Inline-Filter mit Innen- und Außengewinde

In-line filter with female-male thread



G	ØD	A	B	C	SW	Durchfluss	€/St	Bestell-Nr.
G 1/8	16	36	42,0	6	17	ca. 500l/min	13,44	11.174.518
G 1/4	18	41	49,0	8	19	ca. 900l/min	17,19	11.174.514
G 3/8	22	52	60,5	8,5	24	ca. 1.600l/min	24,38	11.174.538
G 1/2	28	62	72,5	10,5	30	ca. 2.800l/min	44,18	11.174.512



▲ empfohlene Fließrichtung  
advised flow direction