



■ Technische Daten:

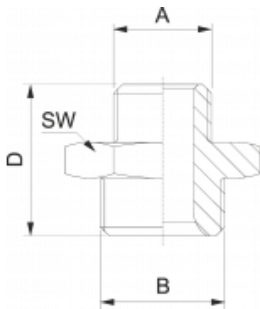
Material: Messing (Ms58)
 Gewinde: zyl. Gew. DIN EN ISO 228
 kon. Gew. DIN EN 10226
 (ISO 7 / DIN 2999)
 Größen: M5 - G1"
 Medium: Luft, Wasser, Öl, Dampf
 Temperatur: max. 150° Grad
 max. Druck: 60 bar

■ Technical data:

Material: brass (Ms58)
 Threads: parallel thread, DIN EN ISO 228
 taper thread, DIN EN 10226
 (ISO 7 / DIN 2999)
 Sizes: M5 - G1"
 Media: air, water, oil, steam
 Temperature: max. 150° Grad
 max. Pressure: 60 bar

Doppelnippel

Parallel nipple

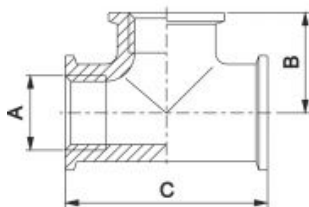


| A | B | D | SW | €/St | Bestell-Nr. |
|-------|-------|----|----|------|-------------|
| M5 | G 1/8 | 17 | 13 | 0,74 | 16.035.358 |
| M5 | M5 | 14 | 8 | 0,58 | 16.035.355 |
| G 1/8 | G 1/8 | 19 | 14 | 0,70 | 16.035.388 |
| G 1/8 | G 1/4 | 22 | 17 | 0,87 | 16.036.384 |
| G 1/4 | G 1/4 | 25 | 17 | 0,87 | 16.037.344 |
| G 1/4 | G 3/8 | 25 | 22 | 1,27 | 16.038.348 |
| G 1/4 | G 1/2 | 25 | 22 | 2,22 | 16.038.342 |
| G 3/8 | G 3/8 | 25 | 22 | 1,27 | 16.040.388 |
| G 3/8 | G 1/2 | 28 | 27 | 2,22 | 16.042.382 |
| G 1/2 | G 1/2 | 30 | 27 | 1,80 | 16.043.322 |
| G 1/2 | G 3/4 | 31 | 32 | 4,17 | 16.044.324 |
| G 3/4 | G 3/4 | 31 | 32 | 4,17 | 16.045.344 |
| G 3/4 | G 1 | 35 | 41 | 6,03 | 16.046.341 |
| G 1 | G 1 | 38 | 41 | 6,17 | 16.047.311 |



T - Stück

Female tee



| A | B | C | €/St | Bestell-Nr. |
|-------|------|----|-------|-------------|
| G 1/8 | 16,0 | 31 | 2,20 | 16.031.218 |
| G 1/4 | 17,5 | 35 | 2,90 | 16.032.214 |
| G 3/8 | 21,5 | 43 | 3,80 | 16.033.238 |
| G 1/2 | 25,0 | 49 | 4,70 | 16.034.212 |
| G 3/4 | 29,5 | 59 | 8,98 | 16.035.234 |
| G 1 | 33,0 | 67 | 13,14 | 16.036.210 |

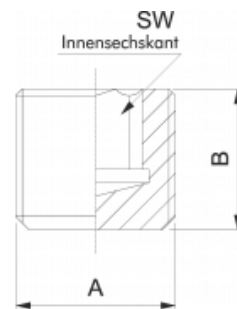


Verschlusschraube mit Innensechskant, DIN 906

Parallel male plug DIN 906



| A | B | SW | €/St | Bestell-Nr. |
|-------|----|----|------|-------------|
| G 1/8 | 8 | 5 | 0,41 | 16.036.218 |
| G 1/4 | 10 | 6 | 0,58 | 16.036.214 |
| G 3/8 | 10 | 8 | 0,74 | 16.036.238 |
| G 1/2 | 10 | 10 | 1,01 | 16.036.212 |
| G 3/4 | 12 | 12 | 2,10 | 16.036.234 |

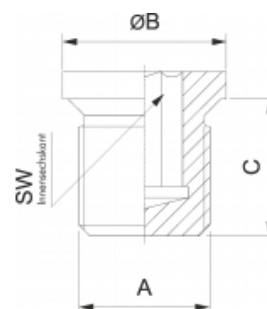


Verschlusschraube mit Innensechskant, DIN 908

Parallel male plug DIN 908



| A | B | C | SW | €/St | Bestell-Nr. |
|-----------------------|----|----|----|------|-------------|
| M 5 (Aussensechskant) | - | - | - | 0,44 | 16.019.205 |
| G 1/8 | 14 | 8 | 5 | 0,49 | 16.020.218 |
| G 1/4 | 18 | 12 | 6 | 0,66 | 16.021.214 |
| G 3/8 | 22 | 12 | 8 | 0,94 | 16.022.238 |
| G 1/2 | 26 | 14 | 10 | 1,31 | 16.023.212 |
| G 3/4 | 32 | 16 | 12 | 2,88 | 16.024.234 |

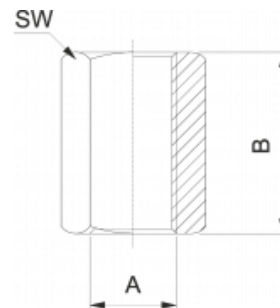


Muffe

Sleeve

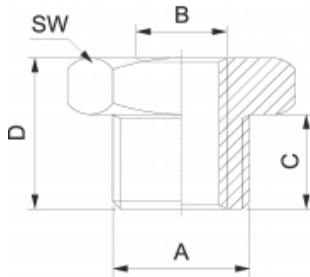


| A | B | SW | €/St | Bestell-Nr. |
|-------|----|----|------|-------------|
| M5 | 10 | 8 | 0,49 | 16.065.305 |
| G 1/8 | 15 | 13 | 0,74 | 16.065.318 |
| G 1/4 | 22 | 17 | 0,97 | 16.066.314 |
| G 3/8 | 22 | 22 | 1,61 | 16.067.338 |
| G 1/2 | 26 | 27 | 2,41 | 16.068.312 |
| G 3/4 | 34 | 32 | 4,23 | 16.069.334 |
| G 1 | 38 | 41 | 6,57 | 16.070.310 |



Reduziernippel kurz

Reducer

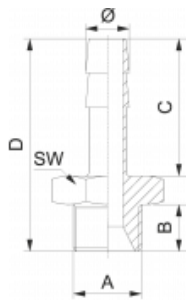


| A | B | C | D | SW | €/St | Bestell-Nr. |
|-------|-------|----|----|----|------|-------------|
| G 1/4 | G 1/8 | 10 | 14 | 17 | 0,72 | 16.048.384 |
| G 3/8 | G 1/4 | 10 | 15 | 22 | 0,80 | 16.050.348 |
| G 3/8 | G 1/8 | 10 | 15 | 22 | 0,94 | 16.049.388 |
| G 1/2 | G 1/4 | 12 | 18 | 27 | 1,31 | 16.051.342 |
| G 1/2 | G 1/8 | 12 | 18 | 27 | 1,69 | 16.051.382 |
| G 17" | G 3/8 | 12 | 18 | 27 | 1,25 | 16.052.382 |
| G 3/4 | G 1/2 | 12 | 19 | 32 | 2,76 | 16.054.324 |
| G 3/4 | G 3/8 | 12 | 19 | 32 | 2,95 | 16.053.384 |
| G 1 | G 3/4 | 15 | 23 | 41 | 3,68 | 16.056.341 |
| G 1 | G 1/2 | 15 | 23 | 41 | 4,17 | 16.055.321 |



Schlauchtülle

Hose connector



| Ø | A | B | C | D | SW | €/St | Bestell-Nr. |
|----|-------|------|------|------|----|------|-------------|
| 3 | M 5 | 4,5 | 8,0 | 16,0 | 7 | 0,53 | 16.023.353 |
| 4 | M 5 | 5,0 | 7,5 | 15,5 | 7 | 0,59 | 16.023.354 |
| 4 | G 1/8 | 7,0 | 17,0 | 28,0 | 14 | 1,21 | 16.023.384 |
| 6 | G 1/8 | 7,0 | 23,5 | 36,0 | 14 | 1,04 | 16.024.386 |
| 9 | G 1/8 | 7,0 | 21,0 | 32,0 | 14 | 1,05 | 11.026.389 |
| 6 | G 1/4 | 9,0 | 24,0 | 38,0 | 17 | 1,17 | 11.025.346 |
| 9 | G 1/4 | 9,0 | 24,0 | 38,0 | 17 | 1,14 | 11.026.349 |
| 10 | G 1/4 | 9,0 | 22,0 | 36,0 | 17 | 1,30 | 16.026.340 |
| 13 | G 1/4 | 9,0 | 27,0 | 41,0 | 17 | 1,36 | 16.026.343 |
| 6 | G 3/8 | 9,0 | 24,0 | 38,0 | 19 | 1,52 | 16.027.386 |
| 9 | G 3/8 | 9,0 | 24,0 | 38,0 | 19 | 1,36 | 16.028.389 |
| 13 | G 3/8 | 9,0 | 27,0 | 41,0 | 19 | 1,55 | 16.029.383 |
| 6 | G 1/2 | 12,0 | 24,0 | 41,5 | 24 | 2,48 | 16.029.326 |
| 9 | G 1/2 | 12,0 | 24,0 | 41,5 | 24 | 2,41 | 16.030.329 |
| 13 | G 1/2 | 12,0 | 27,0 | 45,5 | 24 | 2,48 | 16.031.323 |
| 19 | G 1/2 | 12,0 | 36,0 | 54,0 | 24 | 3,01 | 16.031.329 |
| 13 | G 3/4 | 12,0 | 28,0 | 52,0 | 32 | 4,84 | 16.031.334 |
| 19 | G 3/4 | 16,0 | 36,0 | 60,0 | 32 | 4,84 | 16.031.349 |
| 25 | G 3/4 | 11,0 | 35,5 | 51,0 | 32 | 9,05 | 16.032.345 |
| 25 | G 1 | 12,0 | 35,0 | 53,0 | 37 | 9,40 | 16.032.315 |

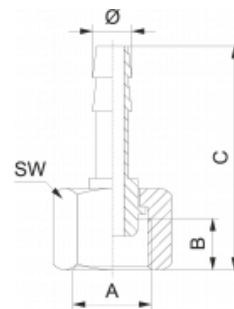


Schlauchtülle mit Überwurfmutter

Hose connector with nut



| Ø | A | B | C | SW | €/St | Bestell-Nr. |
|---|-------|----|----|----|------|-------------|
| 6 | G 1/4 | 13 | 44 | 17 | 1,25 | 16.010.564 |
| 9 | G 1/4 | 13 | 44 | 17 | 1,60 | 16.010.594 |
| 6 | G 3/8 | 15 | 48 | 19 | 1,25 | 16.010.568 |
| 9 | G 3/8 | 15 | 48 | 19 | 1,60 | 16.010.598 |

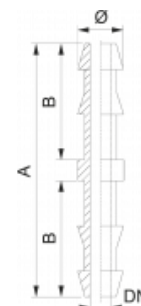


Doppelschlauchtülle

Double hose connector



| Ø | A | B | DN | €/St | Bestell-Nr. |
|----|----|------|------|------|-------------|
| 6 | 72 | 33,5 | 4,9 | 1,38 | 16.032.306 |
| 9 | 72 | 33,5 | 7,9 | 1,53 | 16.033.309 |
| 13 | 74 | 35,0 | 10,8 | 2,42 | 16.034.313 |

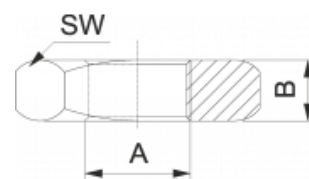


Kontermutter

Nut



| A | B | SW | €/St | Bestell-Nr. |
|-------|-----|----|------|-------------|
| G 1/8 | 3,5 | 14 | 0,43 | 16.009.218 |
| G 1/4 | 3,5 | 17 | 0,46 | 16.010.214 |
| G 3/8 | 4,5 | 22 | 0,59 | 16.011.238 |
| G 1/2 | 5,0 | 27 | 0,65 | 16.012.212 |
| G 3/4 | 5,0 | 32 | 1,70 | 16.013.234 |
| G 1 | 6,0 | 41 | 2,32 | 16.013.210 |

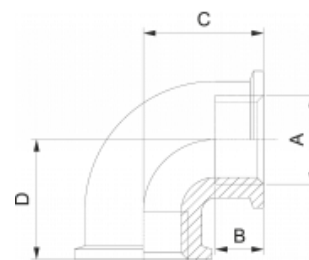


Winkelstück 90°

Elbow 90°

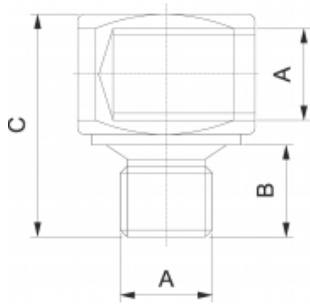


| A | B | C | D | €/St | Bestell-Nr. |
|-------|------|----|----|-------|-------------|
| G 1/8 | - | - | - | 3,11 | 16.037.218 |
| G 1/4 | - | - | - | 2,41 | 16.038.214 |
| G 3/8 | 12,0 | 20 | 20 | 3,04 | 16.039.238 |
| G 1/2 | 13,0 | 24 | 24 | 4,15 | 16.040.212 |
| G 3/4 | 15,0 | 30 | 30 | 6,71 | 16.041.234 |
| G 1 | 16,0 | 33 | 33 | 10,36 | 16.042.210 |



L - Stück in Blockform

Blockshaped elbow 90°

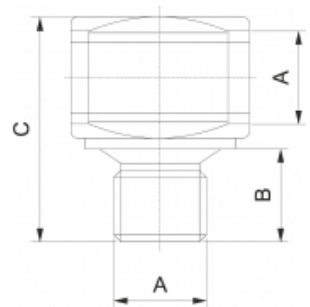


| A | B | C | €/St | Bestell-Nr. |
|-------|------|------|------|-------------|
| M5 | 6,0 | 15,0 | 1,04 | 16.001.205 |
| G 1/8 | 7,0 | 23,0 | 1,40 | 16.002.218 |
| G 1/4 | 10,0 | 29,0 | 2,34 | 16.003.214 |
| G 3/8 | 13,0 | 32,0 | 3,76 | 16.004.238 |



T - Stück in Blockform

Blockshaped tee

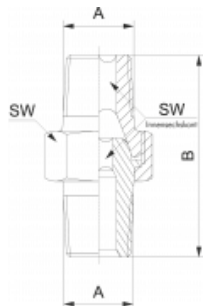


| A | B | C | €/St | Bestell-Nr. |
|-------|------|------|------|-------------|
| M 5 | 6,0 | 15,0 | 1,21 | 16.005.205 |
| G 1/8 | 7,0 | 23,0 | 1,69 | 16.006.218 |
| G 1/4 | 10,0 | 29,0 | 2,65 | 16.007.214 |
| G 3/8 | 13,0 | 32,0 | 4,17 | 16.008.238 |



Doppelnippel mit Withw. - Rohrgewinde kegelförmig, lösbar, mit Innensechskant

Parallel nipple



| A | B | SW | SW (Innensechskant) | €/St | Bestell-Nr. |
|-------|----|----|-----------------------|-------|-------------|
| R 1/8 | 27 | 15 | 5 | 1,34 | 16.001.518 |
| R 1/4 | 34 | 19 | 6 | 1,50 | 16.002.514 |
| R 3/8 | 36 | 22 | 8 | 3,12 | 16.003.538 |
| R 1/2 | 44 | 27 | 12 | 3,32 | 16.004.512 |
| R 3/4 | 52 | 36 | 14 | 11,16 | 16.005.534 |
| R 1 | 65 | 46 | 19 | 19,37 | 16.006.511 |

